

# User Manual

ALCATEL  
onetouch®  
*Pop* NOVA LTE™



CJA1AY001AAA

smart move.

A520L

Thank you for choosing Alcatel ONETOUCH. This booklet helps you get started with your new Alcatel ONETOUCH Pop NOVA LTE™.

#### Important:

Your phone supports a micro-SIM card. Please do not attempt to use any other SIM types since this may damage your phone.

Restart your phone by pressing and holding the power key for more than 7 seconds until the startup screen appears.

In case this does not start your phone, please press and hold the power key and volume up key together until the startup screen appears. From the following menus, short press the power key to select the language and then the “factory reset” option.

**Note: This operation will erase personal settings and saved data.**

For more information about how to use your Pop NOVA LTE™, please go to [www.alcatelonetouch.com](http://www.alcatelonetouch.com) for the complete user manual.

## Table of contents

<b>1</b>	<b>Your mobile .....</b>	<b>3</b>			
1.1	Keys and connectors.....	3			
1.2	Getting started.....	4			
1.3	Home screen .....	5			
<b>2</b>	<b>Text input .....</b>	<b>11</b>			
2.1	Using Onscreen Keyboard .....	11			
2.2	Text editing .....	12			
<b>3</b>	<b>Phone call, Call log and Contacts .....</b>	<b>12</b>			
3.1	Call .....	12			
3.2	Call log .....	15			
3.3	Contacts .....	15			
<b>4</b>	<b>Messaging, Gmail/Email, Google Hangouts.....</b>	<b>19</b>			
4.1	Messaging .....	19			
4.2	Gmail/Email .....	22			
4.3	Google Hangouts.....	25			
<b>5</b>	<b>Calendar &amp; Alarm clock &amp; Calculator.....</b>	<b>26</b>			
5.1	Calendar .....	26			
5.2	Time .....	27			
5.3	Calculator .....	28			
<b>6</b>	<b>Getting connected.....</b>	<b>29</b>			
6.1	Connecting to the Internet.....	29			
6.2	Chrome.....	30			
6.3	Connecting to Bluetooth devices .....	33			
6.4	Connecting to a computer .....	33			
	6.5	Connecting to virtual private networks.....	34		
<b>7</b>	<b>Google Play Store .....</b>	<b>35</b>			
	7.1	Locate the item you want to download and install .....	35		
	7.2	Download and install .....	35		
	7.3	Manage your downloads.....	36		
<b>8</b>	<b>Multimedia applications.....</b>	<b>37</b>			
	8.1	Camera/Camcorder.....	37		
	8.2	Gallery .....	38		
	8.3	YouTube .....	39		
	8.4	Music.....	40		
<b>9</b>	<b>Google Maps .....</b>	<b>41</b>			
	9.1	Get My Location.....	41		
	9.2	Search for a location.....	42		
	9.3	Get driving, public transport or walking directions.....	42		
	9.4	Share a location.....	43		
	9.5	Map view .....	43		
<b>10</b>	<b>Others.....</b>	<b>43</b>			
	10.1	File Manager.....	43		
	10.2	Sound Recorder .....	43		
	10.3	Video Player .....	44		
	10.4	Radio .....	44		
	10.5	Notes.....	45		
	10.6	Setup Wizard .....	45		
	10.7	Other applications.....	46		

<b>11</b>	<b>Settings</b> .....	<b>45</b>
11.1	Wireless & network.....	45
11.2	Device .....	47
11.3	Personal.....	49
11.4	Add account.....	51
11.5	System .....	52
<b>12</b>	<b>Making the most of your phone</b> .....	<b>55</b>
12.1	FOTA Upgrade.....	55
	<b>Safety and use</b> .....	<b>55</b>

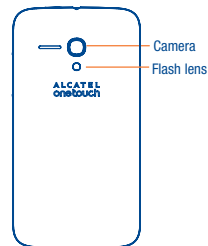
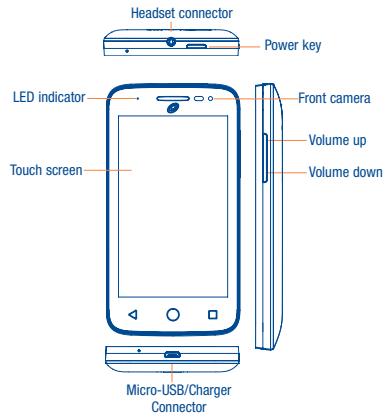


This product meets applicable national SAR limits of 1.6 W/kg. The specific maximum SAR values can be found on page 62 of this user guide.

When carrying the product or using it while worn on your body, either use an approved accessory such as a holster or otherwise maintain a distance of 15 mm from the body to ensure compliance with RF exposure requirements. Note that the product may be transmitting even if you are not making a phone call.

## Your mobile .....

### 1.1 Keys and connectors



#### Back key

- Touch to go back to the previous screen, or to close a dialog box, options menu, the notification panel, etc.

#### Home key

- From any application or screen, touch to return to the Home screen.

#### Menu key

- Touch: As Menu key, touch to access **Manage Home screen**, **Add widgets**, **Manage applications**, **Wallpaper** and **Settings**.
- Touch and hold: Open a list of thumbnail images of apps you've recently worked with.

## Power key

- Press: Lock the screen/Light up the screen.
- Press and hold: Show the pop-up menu to select from Power off/Restart/Airplane mode.
- Press the **Power** key for more than 9 seconds to restart while the phone is turned off.
- Press the **Power** key and **Volume up** key to reset.
- Press the **Power** key and **Volume down** key to capture a screenshot.

## Volume Keys

- In call mode, adjusts the earpiece or headset volume.
- In Music/Video/Streaming mode, adjusts the media volume.
- In general mode, adjusts the ringtone volume.
- Mutes the ringtone of an incoming call.

## 1.2 Getting started

### 1.2.1 Setup

#### Removing or installing the back cover



#### Removing or installing the battery

Please power off your phone before removing the battery.



#### Removing or installing the microSD card

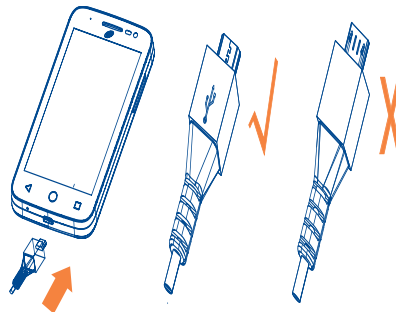


- Open the microSD card protector according to "OPEN" indicating arrow, insert the card into the slot with golden chip facing downward.
- Cover the slot according to "LOCK" indicating arrow.
- To remove the microSD card, open card protector, gently press it out, and then cover the slot.




To avoid data loss and SD card damage, before removing the SD card, please ensure that the SD card is unmounted (**Settings\Storage\Unmount SD card**).

#### Charging the battery



Connect the battery charger to your phone and main socket respectively, the LED indicator will light while charging.

- When using your telephone for the first time, charge the battery fully (approximately 3 hours).

You are advised to fully charge the battery (  ). Charging status is indicated by the percentage on screen while the phone is powered off. The percentage increases as the phone is charged.



To reduce power consumption and energy waste when the battery is fully charged, disconnect your charger from the plug; switch off Wi-Fi, GPS, Bluetooth or background-running applications when not in use; reduce the backlight time, etc.

### 1.2.2 Power on your phone

Hold down the **Power** key until the phone powers on, unlock your phone (Slide, PIN, Password, Pattern or Face unlock) if necessary and confirm. The Home screen is displayed.

If you do not know your PIN code or if you have forgotten it, contact your service provider. Do not leave your PIN code with your phone. Store this information in a safe place when not in use.

#### Set up your phone for the first time

The first time you power on the phone, you should set the following options:

- Select the phone's language, then touch **Get started** → .
- Select font size, then next.
- Select input method, touch next.
- Set Wi-Fi, touch next.
- Set your Google account, touch next.
- Set Antitheft or skip from this setting, touch next.
- Set backup & reset, touch next.
- Set Location, touch next to finish.

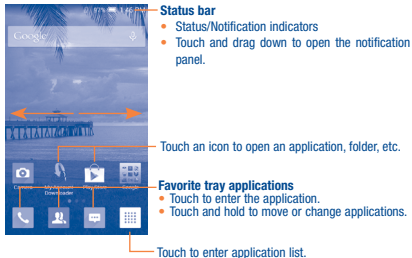
Even if no SIM card is installed, your phone will still power on and you will be able to connect to a Wi-Fi network, (refer to section "6.1.2 Wi-Fi"), sign into your Google account and use some features.

### 1.2.3 Power off your phone

Hold down the **Power** key from the Home screen until the phone options appear, select **Power off**.

## 1.3 Home screen

You can bring all the items (applications, shortcuts, folders and widgets) you love or use most frequently to your Home screen for quick access. Touch the **Home** key to switch to the Home screen.



The Home screen is provided in an extended format to allow more space for adding applications, shortcuts etc. Slide the Home screen horizontally left and right to get a complete view.

### 1.3.1 Using the touchscreen

#### Touch

To access an application, touch it with your finger.

#### Touch and Hold

To enter the available options for an item, touch and hold the item. For example, select a contact in Contacts, touch and hold this contact, an options list will then appear on screen.

#### Drag

Place your finger on the screen to drag an object to another location.

#### Slide/Swipe

Slide the screen to scroll up and down the applications, images, web pages etc. You could slide the screen horizontally too.

The device also supports one finger zooming in the Messaging, Browser, Email, Camera and Gallery functions. Double tap the screen then slide with one finger to zoom in/out.

#### Flick

Similar to swiping, but flicking makes the movement faster.

#### Pinch/Spread

Place two fingers from one hand on to the screens surface and draw them apart or together to scale an element on the screen.

#### Rotate

Automatically change the screen orientation from portrait to landscape by turning the phone sideways to have a better screen view.

### 1.3.2 Status bar

From the status bar, you can view both phone status and notification information.

#### Status icons

	1x connected		Airplane mode
	1x in use		Alarm is set
	3G connected		Speakerphone is on
	3G in use		Roaming
	4G connected		No signal
	4G in use		No SIM card installed
	4G LTE connected		Vibrate mode
	4G LTE in use		Ringer is silenced
	Signal strength		Phone microphone is mute
	Bluetooth is on		Battery is very low
	Connected to a Bluetooth device		Battery is low
	Wi-Fi is on		Battery is partially drained
	Connected to a Wi-Fi network		Battery is full
	Headset connected		Battery is charging

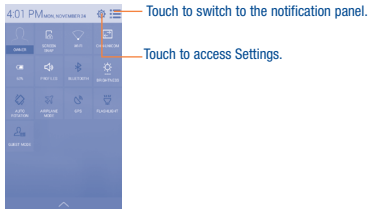
#### Notification icons

	New Gmail message		Missed call
	New Email message		Call forwarding is on
	New text or multimedia message		Song is playing
	Problem with SMS or MMS delivery		Connected to VPN
	New Google Hangouts message		Carrier data use threshold approaching or exceeded
	New voicemail		Radio is on
	Upcoming event		Uploading data
	Screenshot error		Downloading data
	Screenshot captured		Download finished
	microSD card is full		Select input method
	Safe to remove SD card		Phone is connected via USB cable
	Preparing SD card		System update available
	An open Wi-Fi network is available		Receiving location data from GPS

Touch and drag down the Status bar to open the Quick setting panel or Notification panel. Touch and drag up to close it. When there are notifications, you can touch them to access notifications directly.

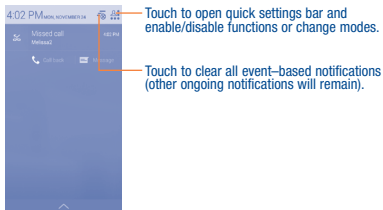
#### Quick setting panel

Touch and drag down the Status bar to open the Quick setting panel, where you can enable or disable functions or change modes by touching the icons.



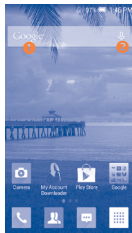
### Notification panel

When there are notifications, touch and drag down the Status bar to open the Notification panel to read the detailed information.




### 1.3.3 Search bar


The phone provides a Search function which can be used to locate information within applications, the phone or the web.



#### 1 Search by text

- Touch Search bar from the Home screen.
- Enter the text/phrase you want to search for.
- Touch the  icon on the keyboard to complete your search.

#### 2 Search by voice

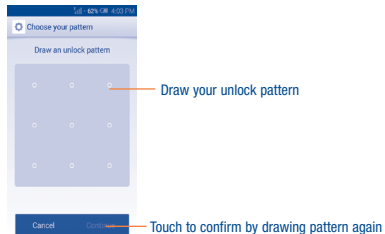
- Touch  from Search bar to display a dialog screen.
- Speak the word/phrase you want to search for. A list of search results will display for you to select from.

### 1.3.4 Lock/Unlock your screen

To protect your phone and privacy, you can lock the phone screen by choosing slide or creating a variety of patterns, PIN or password, etc.

To create a screen unlock pattern (refer to section "Screen lock" for detail settings)

- Touch the **Menu** key from the Home screen, then touch **Settings\Lock settings\Screen lock\Pattern**.
- Draw your own pattern.



### To create a screen unlock PIN/Password

- Touch the **Menu** key from the Home screen, then touch **Settings\Lock settings\Screen lock\PIN or Password**.
- Set your PIN or password.

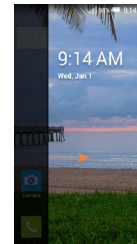
### To lock phone screen

Press the **Power** key once to lock the screen.

### To unlock phone screen

Press the power key once to light up the screen, draw the unlock pattern you have created or enter PIN or password, etc. to unlock the screen.

If you have chosen **Slide** as the screen lock, press the **Power** key to light up the screen first, then slide to the right to unlock the screen.



### 1.3.5 Personalize your Home screen

#### Add

You can touch and hold a folder, an application or a widget to activate the Move mode, and drag the item to any Home screen as you prefer.

#### Reposition

Touch and hold the item to be repositioned to activate the Move mode, drag the item to the desired position and then release. You can move items both on the Home screen and the Favorite tray. Hold the icon on the left or right edge of the screen to drag the item to another Home screen.

#### Remove

Touch and hold the item to be removed to activate the Move mode, drag the item up to the top of the **Remove** icon, and release after the item turns red.

## Create folders

To improve the organization of items (shortcuts or applications) on the Home screen and the Favorite tray, you can add them to a folder by stacking one item on top of another. To rename a folder, open it and touch the folder's title bar to input the new name.

## Wallpaper customization

Touch the **Menu** key on the Home screen then touch **Wallpaper** to customize your wallpaper.

## 1.3.6 Recently-used applications

### Consult recently-used applications

To consult recently-used applications, touch and hold the **Menu** key from the Home screen. Touch a thumbnail in the window to open the related application.



Slide horizontally to view all thumbnails of recently-used applications.

Touch one thumbnail and slide it upward to delete it and slide it downward to lock the thumbnail. If a thumbnail is locked its memory will not be cleared.

## 1.3.7 Volume adjustment

### Using volume key

Press **Volume** key to adjust the volume. To active the vibrate mode, press the **Volume down** key until the phone vibrate. Press the **Volume down** key once more to activate silent mode.


### Using Settings Menu

Touch the **Menu** key from the Home screen, then touch **Settings\Sound\Volumes** you can set the volume of media, ringtone, alarm, and etc. to your preference.

# 2 Text input

## 2.1 Using Onscreen Keyboard

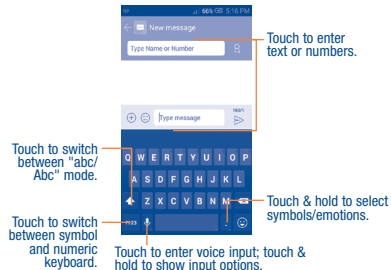
### Onscreen Keyboard settings

Touch the **Menu** key from the Home screen, select **Settings\Language & input**, touch the Settings icon  on the right of **Android keyboard**, and a series of settings will become for your selection.

### Adjust the Onscreen Keyboard orientation

Turn the phone sideways or upright to adjust the Onscreen Keyboard orientation. You can also adjust it by changing the settings (Touch the **Menu** key on the Home screen, then touch **Settings\Display\Auto-rotate screen**).

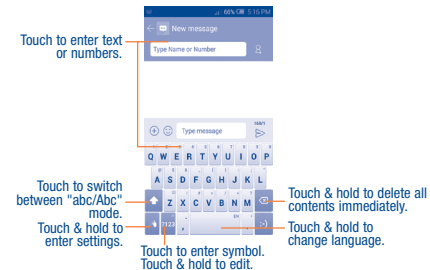
### 2.1.1 Android keyboard



## 2.1.2 Swype






Swype Input lets you enter a word with one continuous motion: just drag your finger over the letters in the word.

- Place your finger on the key with the first letter of the word and drag your finger to each subsequent letter without lifting your finger off the screen.
- Continue until you have finished the word. Lift your finger after the last letter.
- If Swype Input cannot clearly determine your word, the word choice window opens. Select an alternative word from the list.



## 2.2 Text editing

You can edit the text you have entered.

- Touch and hold within the text you would like to edit.
- Drag the tabs to change the highlighted selection.
- The following options will show: **Select all** , **Cut** , **Copy**  or **Paste** .
- Touch the  icon to go back without any action.

**You can also insert new texts as you prefer**

- Touch where you want to type, or touch and hold the blank, the cursor will blink and the tab will show. Drag the tab to move the cursor.
- If you have selected any text, touch the tab to show **PASTE** and **REPLACE** icon which allows you to complete paste immediately.

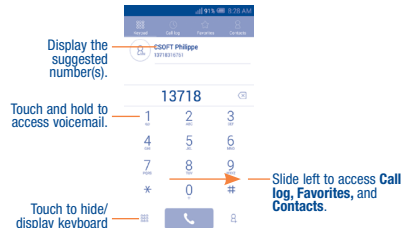



# 3 Phone call, Call log and Contacts

## 3.1 Call .....

### 3.1.1 Placing a call

You can easily launch a call by using **Call**. Touch the  icon on the home screen to access **Call** application.

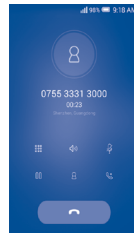


Enter the desired number from the keyboard directly or select a contact from **Contacts** or **Call log** by sliding or touching tabs, then touch  to place the call.

The number you entered can be saved to **Contacts** by touching the  key and touching **CREATE NEW CONTACT**.

If you make a mistake, you can delete the incorrect digits by touching .


To hang up a call, touch  or the **Power** key (when the **Call settings**\ **Power key ends call** option is activated).




### Speed dial settings

You can access this setting screen by touching the **Menu** key and then touching **Speed Dial** on Dial screen. Select contacts to define the 2-9 screen keys as a speed dialer.

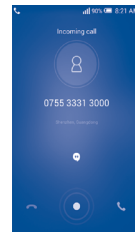
### International call

To dial an international call, touch and hold **0** + to enter "+", then enter the international country prefix followed by the full phone number and finally touch .

### Emergency call

If your phone has network coverage, dial emergency number and touch  to make an emergency call. This works even without a SIM card and without typing the PIN code.

## 3.1.2 Answering or rejecting a call



When you receive a call:

- Slide to the right icon to answer;
- Slide to the left icon to reject;
- Slide upwards to reject the call by sending a preset message.

To mute the ringtone volume of an incoming call, press the **Volume up/down** key or turn over the phone (when the **Call settings**\ **Turn over to mute** option is set to on by default).

### 3.1.3 Calling your voicemail

Your voicemail is provided by your network to avoid missing calls. It works like an answering machine that you can consult at any time.

To access your voicemail, touch and hold **1**  on **Call** tab.

To set your voicemail number, touch the **Menu** key from the Dial screen, then touch **Settings**\ **Voicemail**\ **Service**\ **Setup**\ **Voicemail number**.

If you receive a voicemail, a voicemail icon  appears on the Status bar. Open the Notification panel, touch **New voicemail**.



### 3.1.4 During a call

To adjust the volume during a call, press the **Volume up/down** key.



Touch to end the current call.



Touch to display dial pad.



Touch to activate the speaker during the current call. Touch this icon again to deactivate the speaker.



Touch to mute the current call. Touch this icon again to unmute the call.



Touch to hold the current call. Touch this icon again to retrieve the call.



Touch to view contact list.



Touch to add a call.



To avoid incorrect operations on the touchscreen during a call, the screen will automatically lock and unlock once the cellphone is placed and removed from your ear.

### 3.1.5 Call settings

Touch the **Menu** key from dial screen, then touch **Settings**, the following options are available:

#### RINGTONE & VIBRATE

- **Phone ringtone:** Touch to select phone ringtone.
- **Vibrate when ringing:** Mark the checkbox to vibrate when ringing.

#### VOICE CALL SETTINGS

- **Call forwarding:** Touch to configure how your calls are forwarded when you are busy, unanswered or unreachable.
- **Additional settings:**
  - Caller ID:** Touch to use default operator settings to display my number in outgoing calls.
  - Call waiting:** Mark the check box to notify you of new incoming calls during a call.

#### VOICEMAIL SETTINGS

- **Voicemail**
  - Service:** Touch to select the carrier.
  - Setup:** Touch to set voicemail number for listening to and managing your voicemail.
  - Sound:** Touch to select notification sound.
  - Vibrate:** Mark the checkbox to vibrate when you have a new voicemail.

#### OTHER CALL SETTINGS

- **Fixed Dialing Numbers:** Fixed Dialing Number (FDN) is a service mode of SIM, where outgoing calls are restricted to a set of phone numbers. These numbers are added to the FDN list. The most common practical application of FDN is for parents to restrict the phone numbers to which their children can dial. For security reasons, you'll be prompted to enable FDN by entering SIM PIN2 which is usually acquired from your service provider or SIM maker.
- **Service Dialing Numbers:** You can place a call from SDN list.
- **Dial pad touch tones:** Mark the checkbox to enable playing tones when using the dial pad.
- **Quick responses:** Touch to edit quick responses which will be used when you reject a call with messages.
- **Vibrate reminder:** Mark the checkbox to enable vibration when the call is connected.
- **Turn over to mute:** Marking the checkbox lets you mute the incoming calls by turning the phone over.
- **Power key ends call:** Mark the checkbox to end a call by pressing the **Power** key during the call.
- **Hearing aids:** Hearing aids mode can be used by people who are deaf, have poor hearing or speech impairments. After connecting the phone and Hearing aid machine, it connects to a relay service, which converts incoming speech to text for the person using the Hearing aid and converts outgoing text from the Hearing aid machine to a spoken voice for the person on the other end of the conversation.
- **Noise Cancellation:** Mark the checkbox to reduce the background noise.
- **Pocket mode:** Mark the checkbox to increase ringtone volume and active vibrate mode when device is in a pocket or bag.
- **TTY mode:** TTY mode can be used by people who are deaf, have poor hearing or speech impairments.
- **DTMF Tones:** Touch to set the length of DTMF tones.

#### INTERNET CALL SETTINGS

- **SIP Accounts:** Mark the checkbox to receive incoming calls. Touch "ADD ACCOUNT" to add SIP account.
- **Use Internet calling:** Set internet calling limitation.
- **IMS Account:** Set IMS account details.

## 3.2 Call log

You can access your call memory by touching  from the Dial screen. Touch  on the right side of contact/number to place a call directly.

Touch a contact or number to view information or further operations.

You can view detailed information of a call, launch a new call or send messages to a contact or number, or add numbers to **Contacts**, etc.

To clear the entire call memory, touch the **Menu** key and **Clear call log**.





## 3.3 Contacts

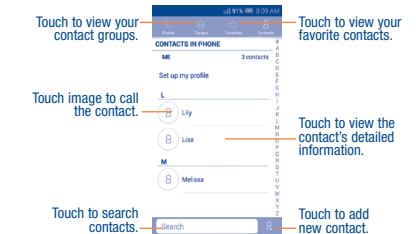
**Contacts** enables quick and easy access to the people you want to reach.

You can view and create contacts on your phone and synchronize these with your Gmail contacts or other applications on the web or on your phone.

### 3.3.1 Consult your Contacts

To access this feature:

- Touch  from the Home screen, then select **Contacts** .
- Touch  from the Home screen, then select **People** .



Touch the **Menu** key to display contacts list option menu, following actions are enabled:

- **Contacts to display** Choose contacts to display.
- **Import/export** Import or export contacts between phone, SIM card, and microSD card, or share contacts.
- **Delete** Select and delete unwanted contacts.
- **Accounts** Manage the synchronization settings for different accounts.
- **Settings** Touch to change the display of the sort list and contact names.

### 3.3.2 Managing contact groups

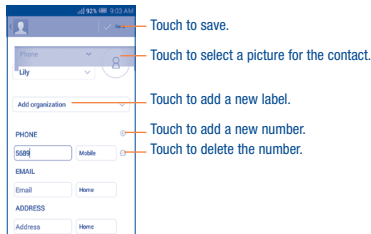
The contact group helps you to improve the organization of your contacts. You can add, remove and view groups in the **Group** screen.

To create a new group, touch the **Menu** key from the group screen, then select **Add Group**, enter the new name and touch **Done** to confirm.

### 3.3.3 Adding a contact

Touch the icon in the contact list to create a new contact.

You are required to enter the contact's name and other contact information. By scrolling up and down the screen, you can move from one field to another easily.



If you want to add more information, touch **Add another field** to add a new category.

When finished, touch **Done** to save.

To exit without saving, you can touch the **Menu** key and then touch **Discard**.

#### Add to/remove from Favorites <sup>(1)</sup>

To add a contact to favorites, you can touch a contact to view details then touch to add the contact to favorites (the star will turn gold in color).

To remove a contact from favorites, touch the golden star on contact details screen.

<sup>(1)</sup> Only phone contacts can be added to Favorites.

### 3.3.4 Editing your contacts

To edit contact information, touch the **Menu** key in the contact details screen, then touch **Edit**. When finished, touch **Done**.

#### Divert calls to voicemail/Set ringtone for a contact <sup>(1)</sup>

On the contact's detail screen, touch the **Menu** key to display contacts list options menu, touch **All calls to voicemail**.

When one contact has been set to send calls directly to voicemail, if he/she calls, your phone will not ring and the caller will be sent directly to your voicemail.

#### Delete a contact

To delete a contact, touch the **Menu** key and **Delete** from contact screen. Tick the contact you want to remove and touch to confirm. Touch **Select all** to delete all contacts.



The contact you have deleted will also be removed from other applications on the phone or web the next time you synchronize your phone.

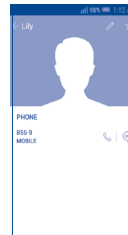
### 3.3.5 Communicating with your contacts

From the contacts list, you can communicate with your contacts by making a call or exchanging messages.

To launch a call to a contact, touch the contact to enter the detail screen, then touch the number.

To send a message to a contact, touch the contact to enter the detail screen, then touch the icon on the right side of the number.

<sup>(1)</sup> You can only set a ringtone for established contacts.



The icons available on Quick Contact panel depend on the information you have for the contact and the applications and accounts on your phone.

### 3.3.6 Contacts importing, exporting and sharing

This phone enables you to import or export contacts between phone, SIM card, microSD card and phone storage.

From the Contacts screen, touch the **Menu** key to open the options menu, touch **Import/export**, then select **Import from SIM card**, **Export to SIM card**, **Import from phone/SD storage**, **Export to phone/SD storage** or **Share visible contacts**.

To import/export a single contact from/to your SIM card, choose an account and target SIM card(s), select the contact you want to import/export, and touch the icon to confirm.

To import/export all contacts from/to your SIM card, choose target SIM card(s), mark **Select all** and touch the icon to confirm.

You can share a single contact or contacts with others by sending the contact's vCard to them via Bluetooth, Gmail, etc.

Touch a contact you want to share, touch the **Menu** key and **Share** from the contact details screen, then select the application to perform this action.

### 3.3.7 Displaying contacts

You can configure which group of contacts, for each account, you want to display in the Contacts list. Touch the **Menu** key and touch **Contacts to display** from contacts list screen, then you can choose contacts to display.

Touch the **Menu** key and **Settings**, you can sort list by the first name or last name, as well as view contact names as first/last name first.

### 3.3.8 Joining/Separating contacts<sup>(1)</sup>

To avoid duplication, you can add any new contact information to existing contacts in a single action.

Touch the contact which you want to add information to, touch the **Menu** key and touch **Edit**, then touch the **Menu** key again and touch **Join**.

At this time, you are required to select the contact whose information you want to join with the first contact. The information from the second contact is added to the first one, and the second contact will no longer be displayed in the Contacts list.

To separate contact information, touch the contact whose information you want to separate, touch the **Menu** key and touch **Edit**, then touch the **Menu** key again and touch **Separate**, touch **OK** to confirm.

### 3.3.9 Accounts

Contacts, data or other information can be synchronized from multiple accounts, depending on the applications installed on your phone.

To add an account, drag down the notification panel and touch  to enter **Settings**, then touch **Add account**.

You are required to select the kind of account you are adding, like Google, Corporate, etc.

As with other account setups, you need to enter detailed information, like username, password, etc.

You can remove an account to delete it and all associated information from the phone. Open the **Settings** screen, touch the account you want to delete, touch the **Menu** key and select **Remove account**, then confirm.

#### Turn on/off the sync & Auto-sync

Touch an account to enter the account screen, mark/unmark the checkbox(s) to turn on/off the account's auto-sync. When activated, all changes to information on the phone or online will be automatically synchronized to each other.

#### Sync manually

You can also synchronize an account manually on **Accounts** screen, touch an account in the list, then touch the **Menu** key and select **Sync now**.


<sup>(1)</sup> Only applicable for phone contacts.

## 4 Messaging, Gmail/Email, Google Hangouts

### 4.1 Messaging.....

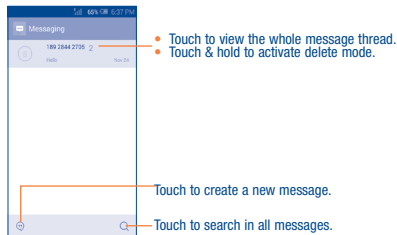
You can create, edit and receive SMS and MMS with this mobile phone.

To access this feature, touch  from the Home screen, then select **Messaging**.

 To consult messages stored in your SIM card, touch the **Menu** key from the Messaging screen, then touch **Settings\Manage SIM messages**.




#### 4.1.1 Write message

On the message list screen, touch the new message icon  to write text/multimedia messages.



For saved contacts, touch the photo to open the Quick Contact panel to communicate with the contact. For unsaved contacts, touch the photo to add the number to your **Contacts**.

#### Sending a text message

Enter the mobile phone number of the recipient in the **Type Name or Number** bar or touch  to add recipients and touch the **Type message** bar to enter the text of the message. Touch the  icon to insert emotions. When finished, touch  to send the text message.





An SMS of more than 160 characters will be charged as several SMS. A counter will be on the right of the text box to remind you how many characters are allowed to be entered in one message. Specific letters (accent) will also increase the size of the SMS, this may cause multiple SMS to be sent to your recipient.

#### Sending a multimedia message

MMS enables you to send video clips, images, photos, animations, slides and sounds to other compatible mobiles and e-mail addresses.

An SMS will be converted to MMS automatically when media files (image, video, audio, slides, etc.) are attached or subject or email addresses are added.

To send a multimedia message, enter the recipient's phone number in the **To** bar, touch **Type message** bar to enter the text of the message. Touch the  icon to attach picture, video, audio and so on. When finished, touch  to send the multimedia message.

#### Attach options:

- **Camera** Access Camera to capture a new picture for attaching.
- **Capture video** Access Camcorder to record a new video for attaching.
- **Record audio** Enter voice message recorder to record a voice message for attaching.
- **Contact** Enter Contacts to select a contact as attachment.
- **Photo** Access Gallery application or File manager to select a picture as attachment.
- **Videos** Access Gallery application or File manager to select a video as attachment.
- **Audio** Access to select an audio file as attachment.
- **Calendar** Access Calendar application to select one or more event(s) to attach.
- **Slideshow** Enter Edit slide show screen, touch **Add slide** to create a new slide, and touch currently existing slide to edit it (see following picture). Touch the **Menu** key to get more actions, like setting the slide duration, adding music, etc.



Touch to go to previous or next slide.


Touch to preview the current slide.

Touch to edit the title of this slide.

#### 4.1.2 Manage messages

When receiving a message, an icon  will appear on status bar as notification. Drag down the status bar to open the Notification panel, touch the new message to open and read it. You can also access the Messaging application and touch the message to open.

Messages are displayed in conversational order.

To reply to a message, touch the current message to enter message composing screen, enter the text, then touch .

Touch and hold an SMS in message details screen. The following message options are available for selection:

- **Select text** Touch to select the message text to copy, cut, paste, etc.
- **Copy text** This option displays when the message is an SMS. Copy the current message content. You can paste it to the enter bar of the new message you are going to compose.
- **Forward** Touch to forward the message to another recipient.
- **Lock/Unlock** Touch to lock/unlock the message so it can't/can be deleted if you reach maximum number of stored messages.
- **View details** Touch to view details of the message.
- **Save messages to SIM card** Touch to save the message to SIM card.
- **Delete** Delete the current message.

#### 4.1.3 Adjust message settings

You can adjust a set of message settings. From Messaging application screen, touch the **Menu** key and touch **Settings**.

- **SMS Enabled** Touch to change your default SMS app.

#### STORAGE

- **Delete old messages** Select to delete old messages when the maximum number of stored messages is reached.
- **Text message limit** Touch to set the number of text messages to be saved per conversation.
- **Multimedia message limit** Touch to set the number of multimedia messages to be saved per conversation.

#### TEXT MESSAGE (SMS) SETTINGS

- **Delivery reports** Mark the checkbox to request a delivery report for each message you send.
- **Message template** Touch to add or edit message templates.
- **Manage SIM messages** Touch to manage text messages stored on your SIM card.
- **SMS storage** Select SMS storage location.

#### SMS SIGNATURE

- **SMS signature** Mark the checkbox to enable signature.
- **Edit SMS signature** Touch to edit SMS signature.

#### MULTIMEDIA MESSAGE (MMS) SETTINGS

- **Group messaging** Touch to send a single message by MMS when there are multiple recipients.
- **Delivery reports** Mark the checkbox to request a delivery report for each message you send.
- **Read reports** Mark the checkbox to request a read report for each message you send.
- **Auto-retrieve** Mark the checkbox to retrieve messages automatically.  
**Roaming auto-retrieve:** Mark the checkbox to retrieve messages automatically while roaming.
- **Maximum message size** Select to input the maximum message size.
- **Creation mode** Select to change creation mode.

## NOTIFICATIONS

- **Notifications** Mark the checkbox to display message notifications in status bar.
- **Sound** Touch to select a ringtone as a new message notification tone.
- **Vibrate** Mark the checkbox to have phone vibrate as a notification when receiving a new message.

## WAP MESSAGES SETTINGS

- **WAP message enable** Mark the checkbox to enable receipt of push message from network.

## CELL BROADCAST SETTINGS

- **Cell broadcast** Mark the checkbox to enable receipt of cell broadcast messages.
- **Select CB ringtone** Touch to select CB ringtone when receive cell broadcast messages.
- **Cell broadcast settings** Touch to set broadcast channel.

## EMERGENCY ALERTS

- **Emergency alerts settings** Touch to enter emergency alerts settings, include whether to show threats and alert tone.

## 4.2 Gmail/Email

The first time you set up your phone, you can select to use an existing Gmail or to create a new Email account.




### 4.2.1 Gmail.....

As Google's web-based email service, Gmail is configured when you first set up your phone. Gmail on your phone can be automatically synchronized with your Gmail account on the web. Unlike other kinds of email account, each message and its replies in Gmail are grouped in your inbox as a single conversation; all emails are organized by labels instead of folders.

#### To access Gmail:


- From the home screen, touch  to enter the applications list, then touch **Gmail**.
- From the home screen, touch  to enter google applications, then touch Gmail.

#### To create and send emails

- Touch the  icon from Inbox screen.
- Enter recipient(s)'s email address in **To** field, and if necessary, touch the **Menu** key and touch **Add Cc/Bcc** to add a copy or a blind copy to the message.
- Enter the subject and the content of the message.
- Touch the **Menu** key and select **Attach file** to add an attachment.
- Finally, touch the  icon to send.
- If you do not want to send the mail out right away, you can touch the **Menu** key and **Save draft** or touch **Back** key to save a copy. To view the draft, touch the  icon, then select **Drafts**.
- If you do not want to send or save the mail, you can touch the **Menu** key and then touch **Discard**.



To add a signature to emails, touch the **Menu** key and **Settings** from inbox screen, choose an account, then touch **Signature**.

#### To receive and read your emails




When a new email arrives, you will be notified by a ringtone or vibration, and an icon  will appear on Status bar.

Touch and drag down the Status bar to display the Notification panel, touch the new email to view it. Or you can also access the Gmail Inbox label and touch the new mail to read it.

You can search for an email by sender, subject, label, etc.

- Touch the  icon from Inbox screen.
- Enter the keyword you want to search for in the searching box and touch .

#### To reply or forward emails

- **Reply** When viewing an email, touch  to reply the sender of this mail.
- **Reply all** Touch  and select **"Reply all"** to send message to all people in a mail loop.
- **Forward** Touch  and select **"Forward"** to forward the received mail to other people.




#### Managing Gmails by Labels

To conveniently manage conversations and messages, you can organize them using a Label.

To label a conversation when reading a conversation's messages, touch the **Menu** key and then choose **Move to**.

To view conversations by labels when viewing your inbox or another conversation list, touch the  icon, then touch a label to view a list of conversations with that label.

Touch and hold an email to activate batch mode, and produce the following options:

-  Touch to archive the email message. To display the archived messages, you can touch in Inbox screen then touch All mail.
-  Touch to delete the email message.
-  Touch to mark an email message as read or unread.

Touch  to show the additional options:

- **Change labels** Touch to change the label of the email message or conversation.
- **Move to Inbox** Touch to move the mail to Inbox.
- **Mark important** To Mark the email as important or not important.
- **Report spam** To report the email message/conversation as spam.
- **Report phishing** To report the email message/conversations as phishing.

## Gmail settings

To manage Gmail settings, touch the icon on the upper left corner and select **Settings** in Inbox screen.

### General settings


- **Archive & delete actions** Touch to set the actions when touch archive and delete.
- **Swipe to archive** Mark the checkbox to enable Swipe to archive in conversation list.
- **Sender image** Mark the checkbox to show sender image beside name in conversation list.
- **Reply all** Touch to mark the checkbox to make the default responding to messages.
- **Auto-fit messages** Touch to mark the checkbox to shrink messages to fit the screen and allow zooming.
- **Auto-advance** Touch to select which screen to show after you delete or archive a conversation.
- **Message actions** Touch to show/hide message actions.
- **Confirm before deleting** Mark the checkbox and you need to confirm before deleting emails.
- **Confirm before archiving** Mark the checkbox and you need to confirm before archiving emails.
- **Confirm before sending** Mark the checkbox and you need to confirm before sending emails.

### Touch an account, and the following settings will show:

- **Inbox type** To set this inbox as the default or priority Inbox.
- **Inbox categories** Touch to enable Inbox appear in other categories.
- **Notifications** Select to activate notification when a new email arrives.
- **Inbox sound & vibrate** Touch to set Ringtone, Vibrate and Notify once.
- **Signature** To add a signature text to the end of each mail you send.
- **Vacation responder** Touch to set the notification when on vacation.
- **Sync Gmail** Mark the checkbox to turn on/off Gmail sync.
- **Days of mail to sync** Touch to set the duration of days for mail sync.
- **Manage labels** Touch to open the Label screen, where you can manage synchronization and notifications.
- **Download attachments** Mark the checkbox to auto download attachments to recent messages via Wi-Fi.
- **Images** Touch to set always show image or ask before showing.

## 4.2.2 Email.....

Besides your Gmail account, you can also set up external POP3, IMAP or Exchange email accounts in your phone.

To access this feature, touch  from the Home screen, then select **Email**. An email wizard will guide you through the steps to set up an email account.


- Enter the email address and password of the account you want to set up.
- Touch **Next**. If the account you entered is not provided by your service provider in the phone, you will be prompted to go to the email account settings screen to enter settings manually. Alternatively, you can touch **Manual setup** to directly enter the incoming and outgoing settings for the email account you are setting up.
- Enter the account name and display name in outgoing emails.
- To add another email account, you can touch the **Menu** key and **Settings**. Touch **ADD ACCOUNT** on the right of the title to create it.

### To create and send emails

- Touch the  icon from Inbox screen.
- Enter recipient(s) email address(es) in the **To** field.
- If necessary, touch the **Menu** key and touch **Add Cc/Bcc** to add a copy or a blind carbon copy to the message.
- Enter the subject and the content of the message.
- Touch the **Menu** key, touch **Attach file** to add an attachment.
- If you do not want to send the mail right away, you can touch the **Menu** key and **Save draft** or touch the **Back** key to save a copy.
- Finally, touch  to send.
- If you do not want to send or save the mail, you can touch the **Menu** key and then touch **Discard**.

## 4.3 Google Hangouts.....

Google's instant messaging service, Google Hangouts, lets you communicate with your friends whenever they are connected to this service.

To access this feature and sign in, touch  from the Home screen, then touch **Hangouts**. All friends added by using Google Hangouts from the web or phone will be displayed in your friends list.

### 4.3.1 Chatting with your friends

To start a chat, touch the name of a friend in your Friends list, then enter your message and finally touch .

You can invite other friends to join in a group chat by touching the **Menu** key and **New group Hangout** and then selecting the friend you want to add.

### 4.3.2 To add a new friend

From Friends list, touch the  icon to add a new friend.

Enter the name, email, number or Circle of the friend you want to add, and if the friend is not yet on Hangouts, the system will require to send invite by telling the friend via SMS or Gmail. A notification with this invitation will be showed in your friend's messaging or Gmail.

If your friends invite you to do video talk or they send you message in the first time, you could select Decline or Reply in response by touching the **Menu** key and Hangout requests.

### 4.3.3 To start and close a chat

Touch one friend from friends list, you could send messages to your friends or have a video call;

After you join Google+ you could send pictures to everyone in the Google Hangouts.

When you want to end a chat, touch back key from Chatting screen directly.

If you want to sign out, touch the **Menu** key and **Settings\Sign out**.

#### 4.3.4 To manage your friends

Besides adding new friends to your friends list, the following actions are available for your choice:

- **To view all friends:** By default, all your friends are displayed in Friends list. Touch your friend could start the conversation directly.

#### 4.3.5 Settings

A series of settings are available for your selection by touching the **Menu** key and **Settings** from chat list screen, and choose an account.

- **Profile photo** Touch to set or change your Google+ profile photo.
- **Share your status** Touch to set your mood, etc.
- **Hangouts messages & invites** Touch to set vibration or play sound when there's a message or invite.
- **Video calls** Touch to set vibration or play sound when there's a video.
- **Customize invites** Touch to set the invites rights.
- **Google+ profile** Touch to join Google+ to get more.
- **Confirm phone number** Touch to confirm your phone number.
- **Blocked people** Touch to view block people.
- **Hidden contacts** Touch to hidden contacts.
- **Sign out** Touch to remove your accounts.
- **Improve Hangouts** Mark the checkbox to report usage data to help improve Hangouts.

## 5 Calendar & Alarm clock & Calculator

### 5.1 Calendar

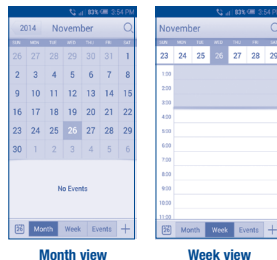
Use Calendar to keep track of important meetings, appointments, etc.

To access this function, touch  from the Home screen, then touch **Calendar**.

#### 5.1.1 Multimode view


You can display the Calendar in monthly and weekly view.

Swipe up and down to change your Calendar view, touch the  icon to return to Today's view.



#### 5.1.2 To create new events



You can add new events from any Calendar view.

- Touch the  icon to access new event edit screen.
- Fill in all required information for this new event. If it is a whole-day event, you can select **ALL DAY**.
- Invite guests to the event. Enter the email addresses of the guests you want to invite with commas to separate. The guests will receive an invitation from Calendar and Email.
- When finished, touch **DONE** from the top of the screen.

Important options by touching the **Menu** key from Calendar main screen:

- **Today** Show date of today.
- **New event** Create new event.
- **Refresh** Refresh the calendar.
- **Search** Search event in the calendar.
- **Calendars to display** Show or hide, remove or add calendars.
- **Clear events** Clear events on the calendar.
- **Go to** Go to the desired date.
- **Settings** Set a series of Calendar settings.

#### 5.1.3 To delete or edit an event

To delete or edit an event, touch the event to enter details screen, touch the  icon to edit the event, and touch the  icon to delete.

#### 5.1.4 Event reminder

If a reminder is set for an event, the upcoming event icon  will appear on Status bar as a notification when the reminder time arrives.

Touch and drag down the status bar to open the notification panel, touch event name to view Calendar notification list.

### 5.2 Time



Your mobile phone has a built-in clock.

To access this function, touch  from the Home screen, then touch **Time**.

#### 5.2.1 World clock



To access this function, touch  on the Time screen.

According to the delivery location, the system will set a default clock.

- Touch the  icon to add a time zone or enter the city name.
- Touch the  icon to select the time zone then touch **Delete**.

#### 5.2.2 Alarm

##### To set an alarm

From Time screen, touch  to enter **Alarm** screen, touch  to add a new alarm. Following options will show:


- **Label** Touch to set a name for the alarm.
- **Repeat** Touch to select days you want alarm to work.
- **Vibrate** Select to activate vibration.
- **Ringtone** Touch to select a ringtone for the alarm.
- **Time** Touch to set time.


When finished, touch **OK** to confirm.

Touch a currently existing alarm to enter alarm editing screen.

Touch  to delete the selected alarm.

## To adjust alarm settings

Touch the  icon from Alarm screen, the following options can now be adjusted:

- **Alarm in silent mode** Select to play alarm with sound or vibration even when the phone is in Silent mode.
- **Snooze duration** Touch to set temporary turn off time of an alarm.
- **Volume Buttons** Touch to set side **Volume up/down** key behaviors when alarm sounds: **None**, **Snooze** or **Dismiss**.
- **Turn over to activate** Touch Turn over to activate  to choose the status Snooze or Stop. Touch the switch to turn on/off snoozing or stopping the alarm by turning over the phone.

### 5.2.3 Timer

From Time screen, touch  to enter **Timer** screen.

Touch **Start** to activate the timer.

Touch **Lap**, a list of records will show below according to the updated time.

Touch **Stop**, the total time and the lap time will not run until touch **Resume**.

Touch **Clear** to delete the record.

### 5.2.4 Countdown

From Time screen, touch  to enter **Countdown** screen.

Touch **Start** to activate Countdown.

Touch **Ringtone** to choose the ringtone. In the time scroll bar to set the time.

## 5.3 Calculator

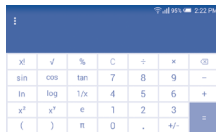
With Calculator, you can solve many mathematical problems.

To access this function, touch  from the Home screen, then touch **Calculator**.

There are two panels available: Basic panel and Advanced panel.

To switch between panels, select one of the following way:

- Turn the device to the landscape mode from basic panel to open the Advanced panel <sup>(1)</sup>.
- Touch the **Menu** key from basic panel to open option menu and touch **Scientific calculator**<sup>(2)</sup>.



<sup>(1)</sup> If "Settings\Display\Auto-rotate screen" is off, this item will not display.

<sup>(2)</sup> If "Settings\Display\Auto-rotate screen" is on, this item will not display.

Enter a number and the arithmetic operation to be performed, enter the second number, then touch "=" to display the result. Touch  to delete digits one by one, touch and hold  to delete all at one time.

You can clear the calculator's history by touching .



When some numbers or operations have been entered, touch and hold the entering bar to open a menu offering these further operations:

- **Cut** To cut selected text
- **Copy** To copy selected text
- **Paste** <sup>(1)</sup> To paste what you have previously copied to the entering bar

<sup>(1)</sup> Option will not appear unless copy or cut operation has been made.

## 6 Getting connected

To connect to the internet with this phone, you can use CDMA/1x/EVDO/LTE networks or Wi-Fi, whichever is most convenient.

### 6.1 Connecting to the Internet

#### 6.1.1 CDMA/1x/EVDO/LTE

The first time you turn on your phone with your SIM card inserted, it will automatically configure your network service: CDMA/1x/EVDO/LTE.

#### To activate/deactivate Data roaming

When roaming, you can decide to connect/disconnect to a data service.

- Touch the **Menu** key from the Home screen.
- Touch **Settings\More...\Mobile networks**.
- Select **Data roaming access** to set roaming mode.
- When Data roaming is disabled, you can still perform data exchange with a Wi-Fi connection (refer to "6.1.2 Wi-Fi").

#### To set preferred network type


- Touch the **Menu** key from the Home screen.
- Touch **Settings\More...\Mobile networks\Preferred network type**.

#### 6.1.2 Wi-Fi

Using Wi-Fi, you can connect to the Internet when your phone is within range of a wireless network. Wi-Fi can be used on your phone even without a SIM card inserted.



### To turn Wi-Fi on and connect to a wireless network

- Touch the **Menu** key from the Home screen, then touch **Settings**.
- Touch the switch  beside Wi-Fi to turn on/off Wi-Fi.
- Touch **Wi-Fi**, the detailed information of detected Wi-Fi networks is displayed in the Wi-Fi networks section.
- Touch a Wi-Fi network to connect. If the network you selected is secured, you are required to enter a password or other credentials (you may contact the network operator for details). When finished, touch **Connect**.

### To activate notification when a new network is detected

When Wi-Fi is on and the network notification is activated, the Wi-Fi icon will appear on the status bar whenever the phone detects an available wireless network within range. The following steps activate the notification function when Wi-Fi is on:

- Touch the **Menu** key and **Settings** from the Home screen.
- Touch **Wi-Fi**, then touch the **Menu** key and **Advanced** from Wi-Fi screen.
- Mark/Unmark the **Network notification** checkbox to activate/deactivate this function.

### To add a Wi-Fi network

When Wi-Fi is on, you may add new Wi-Fi networks according to your preference.

- Touch the **Menu** key and **Settings** from the Home screen.
- Touch **Wi-Fi**, and then touch .
- Enter the name of the network and any required network information.
- Touch **Save**.

When successfully connected, your phone will be connected automatically the next time you are within range of this network.

### To forget a Wi-Fi network

The following steps prevent automatic connections to networks which you no longer wish to use.

- Turn on Wi-Fi, if it's not already on.
- In the Wi-Fi screen, touch & hold the name of the saved network.
- Touch **Forget network** in the dialog that opens.

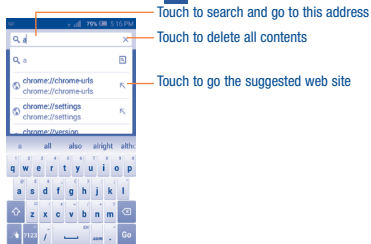
## 6.2 Chrome.....

Using the Browser, you can enjoy surfing the Web.

To access this function, touch  from the Home screen, then touch **Chrome**.

### To go to a web page

On the **Chrome** screen, touch the URL box at the top and enter the address of the web page, then touch **Go** to confirm.




The URL bar will hide after a few seconds. To show the URL bar, you can touch and slide down the screen.

### 6.2.1 Viewing web pages



After opening a website, you can navigate on web pages by sliding your finger on the screen in any direction to locate the information you want to view.

### To find text on a web page

- Touch the **Menu** key from the web page screen, then select **Find in page**.
- Enter the text or phrase you want to find.
- The first word with matching characters will be highlighted on the screen, and subsequent matches will be boxed.
- Touch the up or down arrow to switch to the previous or next matching items.
- When finished, you can touch  or the **Back** key to close the search bar.


Further operations for the text on a web page

You can copy, share or search the text on a web page:

- Touch and hold the text to highlight it.
- Move the two tabs to select the text.
- Touch  to select all words in this web page.
- Touch  to copy the selected text.
- When finished, touch the **Back** key to deactivate the mode.

### To open new window/switch between windows

Multiple windows can be opened at the same time for your convenience.

- Touch  to open all windows' thumbnails.
- Slide up and down to view all windows, touch one to view it.
- Touch **New tab** to open a new window.

- Touch the **Menu** key and select **New incognito tab** to open a window without any trace.
- To close a window, touch  on the window you want to close or slide it sideways.

### Other options:

- |                               |  |
|-------------------------------|--|
| • <b>Bookmarks</b>            | To see your bookmarks.                             |
| • <b>Recent tabs</b>          | Touch to view the recently opened tabs .           |
| • <b>History</b>              | To see browsing history and saved pages.           |
| • <b>Share...</b>             | Touch to share the page via Bluetooth, Gmail, etc. |
| • <b>Print...</b>             | Touch to print the webpage.                        |
| • <b>Add to homescreen</b>    | Touch to add the page shortcut to homescreen.      |
| • <b>Request desktop site</b> | To enable/disable computer version of websites.    |
| • <b>Settings</b>             | Find more options of the Chrome.                   |
| • <b>Help &amp; feedback</b>  | Touch to find help or send feedback.               |

### 6.2.2 Manage links, history, downloads


#### To manage a link, phone number or address displayed on a web page


- **Link** Touch the link to open the web page.  
Touch and hold the link to open options for further operation, like open in new window, save link, share link, copy link, etc.
- **Phone number** Touch to call the phone number.
- **Address** Touch to open Google Maps and locate the address.

#### To download a web application/view your downloads

Before downloading a web application, you need to enable your phone to install web applications (Touch the **Menu** key from the Home screen, touch **Settings\Security**, mark checkbox of **Unknown sources**, finally touch **OK** to confirm).


To download an item, touch the item or the link you want to download.

To cancel a download, touch the downloaded item from the Notification panel, select the item to be canceled, and touch  to confirm.

To view items you have downloaded, touch , then touch the application **Downloads**.

### 6.2.3 Manage bookmarks

#### To bookmark a web page

- Open the web page you want to bookmark.
- Touch the **Menu** key and touch .
- Enter the name and the location if needed and touch **Save** to confirm.

#### To open a bookmark

- Touch the **Menu** key and select **Bookmarks**.

- Touch the bookmark you want to open.

#### To edit a bookmark

- Touch the **Menu** key and select **Bookmarks**.
- Touch and hold the bookmark you want to edit.
- Touch **Edit bookmark**, and input your changes.
- When finished, touch **Save** to confirm

### 6.2.4 Settings

A series of settings are available for your adjustment. To access Browser settings, touch the **Menu** key from Browser screen, and touch **Settings**.

#### Basic

- **Search engine** Touch to set your search engine.
- **Autofill forms** Turn on this function to fill out web forms with a single touch.
- **Save passwords** Touch to check saved passwords.
- **Home page** Touch to set your homepage or turn off this function.

#### Advanced

- **Privacy** Touch to setup privacy items.
- **Accessibility** Touch to change the size of the text display or control a website's zoom.
- **Content settings** Touch to enable/disable **Accept cookies**, **Enable Javascript**, etc.
- **Bandwidth management** Touch to enable/disable browser to preload search results in the background.
- **About Chrome** Touch to check information of Chrome.

### 6.3 Connecting to Bluetooth devices <sup>(1)</sup>

Bluetooth is a short-range wireless communication technology that you can use to exchange data, or connect to other Bluetooth devices for various uses.

To access this function, touch the **Menu** key from the Home screen, then touch **Settings\Bluetooth**, your advice and other available ones will show on the screen.

#### To turn on Bluetooth

- Touch the **Menu** key from the Home screen, then touch **Settings**.
- Touch  to activate/deactivate this function.

To make your phone more recognizable, you can change your phone name which is visible to others.

- Touch the **Menu** key from the Home screen,
- Touch **Settings\Bluetooth**.
- Touch the **Menu** key and **Rename phone**.
- Enter a name, and touch **Rename** to confirm.

#### To make device visible

- Touch the **Menu** key from the Home screen.
- Touch **Settings\Bluetooth**.
- Touch your advice to make it visible or invisible.
- Touch the **Menu** key and **Visibility timeout** to select the visible time.

<sup>(1)</sup> You are recommended to use ALCATEL ONETOUCH Bluetooth headsets, which have been tested and proved compatible with phone. You can go to [www.alcatelonetouch.com](http://www.alcatelonetouch.com) for more information about ALCATEL ONETOUCH Bluetooth headsets.

#### To pair/connect your phone with a Bluetooth device

To exchange data with another device, you need to turn Bluetooth on and pair your phone with the Bluetooth device with which you want to exchange data.

- Touch the **Menu** key from the Home screen.
- Touch **Settings\Bluetooth**.
- Touch **SEARCH FOR DEVICES**.
- Touch a Bluetooth device you want to be paired with in the list.
- A dialog will popup, touch **Pair** to confirm.
- If the pairing is successful, your phone connects to the device.

#### To disconnect/unpair from a Bluetooth device

- Touch the Settings icon  beside the device you want to unpair.
- Touch **Unpair** to confirm.

### 6.4 Connecting to a computer <sup>(2)</sup>

With the USB cable, you can transfer media files and other files between your microSD card/internal storage and the computer.

Before using MTP or PTP you should first mark **USB debugging**.

- To access this function, touch **Settings>About phone**, then touch **Build number** 7 times. Now you may touch **Settings\Developer options\USB debugging**.

#### To connect/disconnect your phone to the computer:

To connect:

<sup>(2)</sup> You can change your default connection mode via **Settings\Storage** Touch the **Menu** key\ **USB computer connection**. Some operations which are available under mass storage are not usable under MTP and PTP.

- Use the USB cable to connect the phone with your computer. You will receive a notification that the USB is connected.
- If connected successfully, a notice will popup in notification panel.

Touch the notice to change connect mode, such as **Media device (MTP)**, **Camera(PTP)**, **Charging**.



Before using MTP, make sure that the driver (Windows Media Player 11 or higher version) has been installed.

To locate the data you have transferred or downloaded in the internal storage, touch **File Manager**. All data you have downloaded is stored in **File Manager**, where you can view media files (videos, photos, music and others), rename files, install applications into your phone, etc.


#### To safely remove the microSD card from your phone

The microSD card can be removed from your phone any time the phone is powered off. To remove the microSD card while the phone is on, you must unmount the storage card from the phone first, to prevent corrupting or damaging the storage card.

- Touch the **Menu** key from the Home screen,
- Touch **Settings\Storage**.
- Touch **Unmount SD card**.

You can now safely remove the microSD card from the phone.


#### To format a microSD card

- Touch the **Menu** key from the Home screen,
- Touch **Settings\Storage**.
- Touch **Erase SD card**. On the screen a popup warns you that formatting the microSD card will erase its contents, touch .

## 6.5 Connecting to virtual private networks

Virtual private networks (VPNs) allow you to connect to the resources inside a secured local network from outside that network. VPNs are commonly deployed by corporations, schools, and other institutions so that their users can access local network resources when not inside that network, or when connected to a wireless network.

#### To add a VPN

- Touch the **Menu** key from the Home screen.
- Touch **Settings\More...\VPN** and then touch .
- In the screen that opens, follow the instructions from your network administrator to configure each component of the VPN settings.
- Touch **Save**.

The VPN is added to the list on the VPN settings screen.



Before adding a VPN, you should set a PIN code or password for your phone.

#### To connect/disconnect to a VPN

To connect to a VPN:

- Touch the **Menu** key from the Home screen.
- Touch **Settings\More...\VPN**.
- VPNs you have added are listed; touch the VPN you want to connect with.
- In the dialog that opens, enter any requested credentials and touch **Connect**.

To disconnect:

- Open the Notification panel and touch the resulting notification for the VPN disconnection.

#### To edit/delete a VPN

To edit a VPN:

- Touch the **Menu** key from the Home screen.

- Touch **Settings\More...\VPN**.
- VPNs you have added are listed; touch & hold the VPN you want to edit.
- Touch **Edit profile**.
- After finished, touch **Save**.

To delete:


- Touch and hold the VPN you want to delete, in the dialog that opens, touch **Delete profile**.

## 7

## Google Play Store <sup>(1)</sup> ....

Google Play Store is an online application store, where you can download and install applications and games to your Android Powered Phone.

To open Google Play Store:

- Touch  from the Home screen, then touch **Play Store**.
- For the first time you access Google Play Store, a screen with terms of service pops up for your attention.

Touch the **Menu** key then touch **Help** to enter Google Play Store help page for more information on this function.

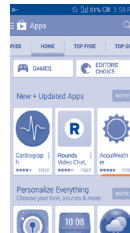
## 7.1 Locate the item you want to download and install

Google Play Store home page provides several ways to find applications. It showcases applications and games in categorized listings.

Touch the  icon at the top left corner and **My Apps** to see all your downloads.

<sup>(1)</sup> Depending on your country and service provider.

Touch a category on Google Play Store screen to browse its contents. You can also select a subcategory if there is any. Within each category you can select to view items sorted by Top paid, Top free, Top grossing, etc.




Touch to search in **Play Store**.


Slide left and right to see all categories.

Touch the Google Play Store icon  on the top left of the screen or touch **Back** key to return to the previous screen.

## 7.2 Download and install

#### To download & install:


- Navigate to the item you want to download, and select to enter the details screen from which you can read its description, overall rating or comments, view developer's information, etc.
- Touch **Install** to preview the functions and data the application can access on your phone if you install it.
- Touch **Accept**.
- The progress of the download will show on the details screen, touch  to stop downloading the item. You can also access this screen through Notification panel.

- After download and installation have finished, you will see a notification icon  on the status bar.



Be especially cautious with applications that have access to many functions or to a significant amount of your data. Once you accept, you are responsible for results of using this item on your phone.

#### To open the application you have downloaded:

- On Google Play Store screen, touch  and **My Apps**.
- Touch the installed application in the list, then touch **Open**.

#### To buy an application <sup>(1)</sup>

On Google Play Store, some applications are labeled as free, while some of them are to be paid for before downloading and installing.


- Touch the application you want to buy.
- Touch the price on the upper-right of the screen to preview the functions and data the application can access on your phone if you install it.
- Touch **Continue** to confirm.
- When making your first purchase, you are required to input your credit card information and to log in to Google payment and billing service.
- If your account has multiple credit card accounts, select one to proceed.
- Select the Terms of service link and read the document. When finished, touch **Back** key.
- Mark the checkbox if you agree with the terms of service.
- Touch **Buy now** at the bottom of the screen.

When finished, Android downloads the application.

<sup>(1)</sup> Google Paid applications may not be available to users in some countries.

#### To request a refund

If you are not satisfied with the application, you can ask for a refund within 15 minutes of the purchase. Your credit card will not be charged and the application will be removed. If you change your mind, you can install the application again, but you will not be able to request a refund.

- Touch  and **My apps** from Google Play Store screen.
- Touch the application that you want to uninstall and refund.
- Touch **Refund** to uninstall the application and refund. If the button becomes **Uninstall**, your trial period has expired.
- In the survey form, select the answer that best matches your reason, and touch **OK**.

## 7.3 Manage your downloads

After you downloaded and installed an application, the following further operations are available for your selection.

#### View

On Google Play Store screen, touch  and **My Apps**.

#### Uninstall

On Google Play Store screen, touch  and **My Apps**. Touch the application you want to uninstall to enter the details screen, touch **Uninstall**, and finally touch **OK** to confirm.

#### Refund

On Google Play Store screen, touch  and **My Apps**. Touch the application you want to uninstall for a refund, touch **Refund**, and finally touch **OK** to confirm.

#### Update notification

On Google Play Store screen, touch  and **My Apps**. Touch the **Menu** key and **Settings\Notifications** to enable update notification.

#### Auto update

Touch the **Menu** key and **Settings\Auto-update apps** to enable this function. To auto update one specific application, mark the checkbox of **Auto-update apps at any time. Do not auto-update apps** or **Auto-update apps over Wi-Fi only** from the details screen,

#### Rate and review

Open the details screen for an application, touch the stars ★★★★★ beside **Rate this app** to award and input comments, touch **OK** to confirm.

#### Flag

You can report an inappropriate application to Google Play Store by flagging it. Open the details screen for the application, scroll to the bottom and touch **Flag as inappropriate**, enter the reason and finally touch **Submit**.

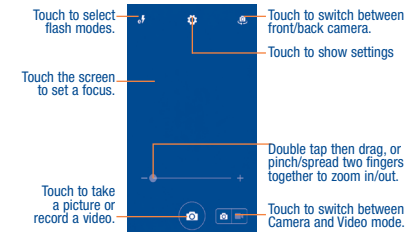
# 8 Multimedia applications

## 8.1 Camera/Camcorder.....


Your mobile phone is fitted with a Camera and a Camcorder for taking photos and shooting videos.

Before using the Camera or Camcorder, please be sure to remove the protective lens cover before use to avoid it affecting your picture quality.

To access this function, touch  from the Home screen and then touch **Camera**.





#### To take a picture

The screen acts as the viewfinder. First position the object or landscape in the viewfinder, touch the screen to focus if necessary, touch the  icon to take the picture which will be automatically saved.

## To shoot a video

Switch Camera mode to Video mode. First position the object or landscape in the viewfinder, and touch the  icon to start recording. Touch the  icon to stop recording. The video will be automatically saved.

## Further operations when viewing a picture/video you have taken

- Slide left to quick review the picture/video.
- Touch the  icon then Gmail, Bluetooth, MMS, etc to share the photo or video you have taken.
- Touch the  icon to access **Gallery**.
- Touch the **Back** key to return to **Camera** or **Camcorder**.

### 8.1.1 Settings in framing mode

Before taking a photo, touch the  icon you can adjust a number of settings in framing mode.

- **Panorama** Touch to enable the panorama mode.
- **Manual** Set the items (flash, white balance, focus distance, etc.) manually.
- **QR Scan** Touch to scan QR code.
- **HDR** Touch to enable the HDR mode.
- **Sports** Touch to enable the sports mode.
- **Night** Touch to enable the night mode.
- **Filter** Select different background effect.
- **Picture size** Touch to adjust picture size.
- **Timer** Touch to set time duration.
- **Advanced** Touch to turn on/off GPS tag and shutter sound, etc.
- **Restore defaults** Touch to restore default settings.

Switch to front camera, touch the  icon to access camera settings and the following options will display for your choice:

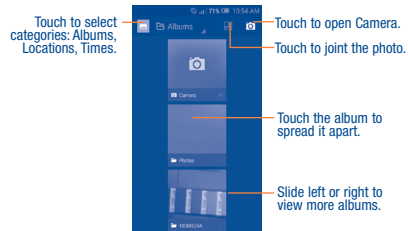
- **Collage** Touch to capture 4 small photos as a collage.
- **Filter** Select different background effect.

## 8.2 Gallery .....



Gallery acts as a media player for you to view photos and playback videos. In addition, a set of further operations to pictures and videos are available for your choice.

To access this function, touch  from the Home screen, then touch **Gallery**.



## To view a picture/play a video


Pictures and videos are displayed by albums in **Gallery**.

- Touch an album and all pictures or videos will spread the screen.
- Touch the picture/video directly to view or play it.
- Slide left/right to view previous or next pictures/videos.

## Working with pictures

Gallery provides a multi-select function, so that you can work with pictures/videos in batches.

You can touch one album, then slide left or right to view the pictures.

Touch a picture you want to work on, touch the  icon to delete selected one. Touch  to share selected ones.

Touch the **Menu** key to setting them as contact ID or wallpaper, etc.

Touch  from full-screen picture view, more options will display for you to choose from.



## 8.3 YouTube .....



YouTube is an online video-sharing service where the user can share and view videos. It supports a streaming function that allows you to start watching videos almost as soon as they begin downloading from the Internet.

To access this function, touch  from the Home screen, then touch **YouTube**.



As an online video service, your phone must have a network connection to access YouTube.



Touch to search for a video.

Touch to play the video and to show more information.

By touching the **Menu** key from YouTube screen, you can set General settings for YouTube. For details about these features, please visit the YouTube website: [www.YouTube.com](http://www.YouTube.com).

### 8.3.1 Watch videos

Touch a video to play it. In the Playing screen, you can view information and comments of the video, and also reach to more related ones. You can also rate, share, label as favorite, create a new playlist, etc. from this screen.

To exit video playing screen, touch **Back** key to return to the video list.

## 8.4 Music.....

Using this menu, you can play music files stored on the microSD card in your phone. Music files can be downloaded from computer to microSD card using a USB cable.

To access this function, touch  from the Home screen, then touch **Music**.

You will find eight libraries in which all songs are classified: **All, Favorite, Folder, Artist, Album, Genre, Recently, and Playlist**. Touch a category and view the list.

### 8.4.1 Playing music

Touch a song to play it. Touch on the left bottom of the playing screen to find below options:



- ① Touch to play the current playlist in shuffle mode (tracks are played in random order).
- ② Touch to skip to the previous track in the album, playlist, or shuffle.
- ③ Touch to pause/resume playback.
- ④ Touch to skip to the next track in the album, playlist, or shuffle.
- ⑤ Touch to select repeat mode: Repeating all songs, Repeating current song, or Repeat is off.
- ⑥ Touch to add to favorite songs.
- ⑦ Touch to hide/display lyrics.



While playing songs with Play Music, the operation of pause, play or skip is still available even if the screen is locked.

### Adjust sound effects

Touch the **Menu** key and select **Sound effects** from the playing screen to enable and adjust sound effects.

### 8.4.2 Working with playlists

Playlists allow you to conveniently organize all songs stored in the SD card or phone storage.

You can create a new playlist, add a song to the list, and delete or rename a playlist.

#### To create a playlist

Touch **Playlist** from the Playlists screen, touch  and enter the name, touch **Save** to finish.

#### To delete a playlist

Touch a playlist to show the menu, touch **Delete**, then touch **OK** to confirm.

#### To rename a playlist

Touch a playlist to show the menu, then touch **Rename**. When finished, touch **Save** to confirm.

## 9 Google Maps .....



### 9.1 Get My Location

#### 9.1.1 Choose a data source to decide My Location

Touch the **Menu** key from the Home screen, touch **Settings\Location access**.

Touch the switch  beside **Location access** switch beside **Location access**, touch **Agree** to turn on.

#### 9.1.2 Open Google Maps and view My Location

Touch  from the Home screen, then touch **Maps**.

Touch  icon on the map to view **My Location**.

The map will then center on a blue dot with a blue circle around. Your actual position is within the blue circle.



To move the map, drag the map with your finger.

To zoom in and out of a map, pinch or spread your fingers, or you can also zoom in by double-tapping a location on screen.

## 9.2 Search for a location

While viewing a map, touch the search icon  to activate search function.

In the search box, enter an address, a city or a local business.

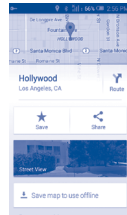
Touch  and your search results will appear on the map as red dots. You can touch one to show a label.





## 9.3 Get driving, public transport or walking directions

### 9.3.1 Get suggested routes for your trip


Touch the  icon from Maps screen.

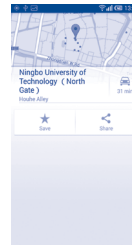


- Touch enter bar to edit your start point by one of the following methods: entering an address or using My Location.
- Do likewise for your end point.
- To reverse directions, touch the .
- Then select a transport mode: driving by car, using public transport, or walking directions.
- A couple of suggested routes will appear in a list. Touch any route to view their respective detailed directions.
- Touch the  icon for route options to avoid motorways and tolls when choosing driving by car or for editing the departure and arrival time when using public transport.

To get reverse directions for a route you've already made, simply touch the  icon. No need to enter your start point and end point again.

## 9.4 Share a location

- Touch & hold a location on a map.
- Touch the information at the bottom then touch the  icon to share the location.



## 9.5 Map view

Touch the  icon at the left lower corner, you could switch the map view to **Traffic**, **Public transit**, **Bicycling**, **Satellite**, **Terrain**, **Google Earth**, etc.

# 10 Others

## 10.1 File Manager .....



To access this function, touch  from the Home screen, then touch **File Manager**.

**File Manager** displays all data stored on the phone and the microSD card, including applications, media files downloaded from Google Play Store, YouTube or other locations; videos, pictures or audios you have captured; other data transferred via Bluetooth, USB cable, etc.

When you download an application from PC to phone/microSD card, you can locate the application on File Manager, then touch it to install it in your phone.

**File Manager** allows you to perform and be really efficient with the following common operations: create (sub) folder, open folder/file, view, rename, move, copy, delete, play, share, etc.

## 10.2 Sound Recorder .....



To access this function, touch  from the Home screen, then touch **Sound Recorder**.

**Sound Recorder** allows you to record voice/sound for seconds/hours.

## 10.3 Video.....

To access this function, touch  from the Home screen, then touch **Video Player**.

**Video** allows you view media in a pop up window, so your video stays at the front of the screen.



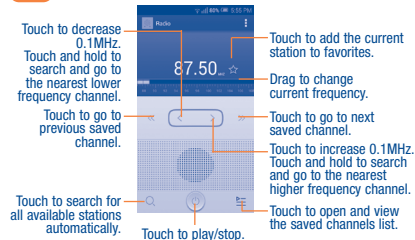
- 1 Touch to loop the video.
- 2 Touch to view the video in a pop window at the front of the screen.
- 3 Touch to view in full screen mode.
- 4 Slide to the right to fast forward for 30 seconds.
- 5 Slide to the left to slow-reverse the video for 10 seconds.
- 6 Pinch to zoom in/out.

## 10.4 Radio .....


Your phone is equipped with a radio <sup>(1)</sup> with RDS <sup>(2)</sup> functionality. You can use the application as a traditional radio with saved channels or with parallel visual information related to the radio program on the display if you tune to stations that offer Visual Radio service.

To access this function, touch  from the Home screen, then touch **Radio**.

 To use it, you must plug in your headset, which works as an antenna connected with your phone.



- <sup>(1)</sup> The quality of the radio depends on the coverage of the radio station in that particular area.
- <sup>(2)</sup> Depending on your network operator and market.

Touch  on the up right corner of the radio playing screen to find available options:

- **Edit name** Edit the channel name.
- **Audio mode** Listen to the radio using loudspeaker or headset.
- **Delete** Delete the channel
- **Enter frequency** Enter the frequency manually.
- **Station Info** Mark the checkbox to show station information.
- **Exit** Turn off the radio.

## 10.5 Note .....

To access this function, touch  from the Home screen, then touch **Notes**.

Use **Note** to note down inspirations, ideas, excerpts, things to do and all those things you may want to keep for future reference.

## 10.6 Setup Wizard.....

To access this function, touch  from the Home screen, then touch **Setup Wizard**.

Setup Wizard helps set up your phone in multiple ways: language, input method, mobile data connection, account setup and synchronization, system update, etc. This will also be performed the first time you power on your phone.

## 10.7 Other applications <sup>(1)</sup>

The previous applications in this section are preinstalled on your phone. To read a brief introduction of the preinstalled 3rd party applications, please refer to the leaflet provided with the phone. You can also download thousands of 3rd party applications by going to Google Play Store on your phone.

## Settings .....

To access this function, touch the **Menu** key and **Settings** from Home screen.

### 11.1 Wireless & network

#### 11.1.1 Wi-Fi

Using Wi-Fi you can now surf the Internet without using your SIM card whenever you are in range of a wireless network. The only thing you have to do is to enter the **Wi-Fi** screen and configure an access point to connect your phone to the wireless network.

For detailed instructions on using Wi-Fi, please refer to "6.1.2 Wi-Fi".

#### 11.1.2 Hybrid download


You have access to a dynamic variety of downloadable content, such as music, pictures, movies and applications. (Additional charges may apply.) Follow the steps below to access and download content.

**To turn Hybrid download on**

- Touch the **Menu** key from the Home screen, then touch **Settings**.

<sup>(1)</sup> Application availability depends on country and provider.



- Touch the switch  beside Hybrid download to turn on/off Hybrid download.
- Touch **Hybrid download**, the detailed information of detected Wi-Fi networks is displayed in the Wi-Fi networks section.



To enable Hybrid download, both WLAN and Mobile data must be turned on. Downloading via mobile networks may result in additional charges depending on your payment plan.

### 11.1.3 Bluetooth

Bluetooth allows your phone to exchange data (videos, images, music, etc.) in a small range with another Bluetooth supported device (phone, computer, printer, headset, car kit, etc.).

For more information on Bluetooth, please refer to “6.3 Connecting to Bluetooth devices”.

### 11.1.4 Data usage

Touch the **Menu** key you can view settings related to your data usage. Mark the checkbox of set mobile data limit. Your mobile data connection will be disabled when the specified limit is reached. You can also choose a data usage cycle to view the statistics and related applications of used data by your phone.



Data usage is measured by your phone, and your provider may count differently. Please consider using a conservative limit.

### 11.1.5 More...\Airplane mode

Mark the checkbox of **Airplane mode** to simultaneously disable all wireless connections including Wi-Fi, Bluetooth and more.

### 11.1.6 More...\Default SMS app

Select default SMS app from **Hangouts** or **Messaging**.

### 11.1.7 More...\VPN

A mobile virtual private network (mobile VPN or mVPN) provides mobile devices with access to network resources and software applications on their home network, when they connect via other wireless or wired networks. Mobile VPNs are used in environments where workers need to keep application sessions open at all times, throughout the working day, as the user connects via various wireless networks, encounters gaps in coverage, or suspend-and-resumes their devices to preserve battery life. A conventional VPN cannot survive such events because the network tunnel is disrupted, causing applications to disconnect, time out, fail, or even the computing device itself to crash.

For more information on VPN, please refer to “6.5 Connecting to virtual private networks”.

### 11.1.8 More...\Mobile networks

#### Data Enabled

If you do not need to transmit data on all mobile networks, unmark the checkbox to avoid incurring significant charges for data use on local provider mobile networks, particularly if you do not have a mobile data agreement.

#### Data Roaming Access

If you don't need to transmit data on other provider's mobile networks, unmark the checkbox to avoid incurring significant roaming charges.

#### Preferred network type

You can select your preferred network with this menu.

#### System select

Select the CDMA roaming mode.

#### CDMA subscription

Change between RUIM/SIM and NV.

### 11.1.9 More...\Emergency alert settings

Touch to find more options of the emergency alerts.

## 11.2 Device

### 11.2.1 Gestures

The device enables you to mark the following gestures:

- **Turn over to mute:** Mark the checkbox to mute ringtone by turning the phone over when there's an incoming call, etc.
- **Turn over to activate:** Touch to set snooze or dismiss, mark the checkbox to mute ringtone by turning the phone over when alarms..
- **Shake to switch music:** Mark the checkbox to shake to switch to the next song when phone unlocked.
- **Unlock:** Mark the checkbox to enable double click screen to unlock when screen light off.
- **Lock:** Mark the checkbox to enable double click screen to lock when screen light on.


### 11.2.2 Sound

Use the Sound settings to configure many aspects of call and notification ringtones, music, and other audio settings.

- **Volumes:** Touch to set volume for Media, Ringtone, Notifications and Alarm.
- **Silent mode:** Touch to silence all sounds (mute or vibrate) except media & alarms.
- **Phone ringtone:** Touch to set your default incoming call ringtone.
- **Vibrate when ringing:** Mark the checkbox to enable vibration and ringtone at the same time.
- **Default notification sound:** Touch to set the default sound for notifications.

- **Dial pad touch tones:** Mark the checkbox to enable playing tones when using dial pad.
- **Touch sounds:** Mark the checkbox to enable sound when touch the screen to select any menu or app.
- **Screen lock sound:** Mark the checkbox to enable playing sounds when locking and unlocking the screen.
- **Vibrate on touch:** Mark the checkbox to activate vibration when touching keys.

### 11.2.3 Display

- **Automatic brightness:** Touch the switch  to enable/disable automatically adjust the brightness of the screen.
- **Wallpaper:** Touch to set the wallpaper.
- **Auto-rotate screen:** Touch to select whether rotate screen automatically or not.
- **Sleep:** Touch to set screen timeout.
- **Daydream:** Touch to set the Daydream.
- **Font size:** Touch to set the font size.
- **Wi-Fi Display:** Touch to turn on/off Wi-Fi display.

### 11.2.4 Lock settings

#### Screen lock

<b>None</b>	Touch to disable screen unlock security.
<b>Slide</b>	Touch to enable slide unlock mode.
<b>Face Unlock</b>	Touch to enable face unlock mode.
<b>Pattern</b>	Touch to draw pattern to unlock screen.
<b>PIN</b>	Touch to enter a numeric PIN to unlock screen.
<b>Password</b>	Touch to enter a password to unlock screen.

- **Lock options:** Select the items you want to lock such as custom weather, message and components on the lock screen.
- **Owner info:** Mark the checkbox to edit and show owner info on lock screen.

### 11.2.5 LED indicator

Touch to turn on/off the LED indicator.

### 11.2.6 Status bar hidden

Touch to set whether all notifications of third application will be shown on the top left of the status bar.

### 11.2.7 Storage

Use these settings to monitor the total and available space on your phone and on your microSD card; to manage your microSD card; and if necessary, to reset the phone, erasing all of your personal information.

#### SD card

Lists the amount of space on any microSD card installed in your phone and the amount you can use to store photos, videos, music, and other files. You can touch one category to access the function and learn more details.

#### Internal storage

This menu displays the amount of internal phone storage in different colors. The available space will be shown in grey, which shows the amount of internal phone storage used by the operating system, its components, applications (including those you downloaded), permanent and temporary data.



To switch the Internal storage location may result that some data could not be used and the running applications error. If a warning message comes up saying that phone memory is limited, you are required to free up space by deleting some unwanted applications, downloaded files, etc.

### Mount/Unmount SD card

You must mount the microSD card before using applications and files in it, or formatting the microSD card. Unmount the microSD card from your phone so that you can safely remove it when the phone is on.

### Erase SD card

Permanently erases everything on a microSD card and prepares it for use with your phone.

### 11.2.8 Battery

#### Battery Percentage

Mark the checkbox to show battery percentage on the status bar.

In battery management screen, touch one category, then you can view specific power consumption.

You can adjust power use via the screen brightness or screen timeout in Display screen.

### 11.2.9 Apps

You use the **Apps** settings to view details about the applications installed on your phone, to manage their data and force them to stop, and to set whether you want to permit installation of applications that you obtain from web sites and emails.


#### Apps

- **Downloaded:** Touch to manage and remove installed applications.
- **On SD card:** Touch to view a manage applications on SD card.
- **Running:** Touch to view and control currently running service.
- **All:** Touch to view storage used by applications.

## 11.3 Personal

### 11.3.1 Location

#### Location

Touch the switch  to enable to use information from Wi-Fi and mobile networks to determine your approximate location, for use in Google Maps, when you search, and so on. When you select this option, it will ask whether you consent to share your location anonymously with Google's location service.

#### Mode

Touch to choose location mode to **High accuracy**, **Battery saving** or **Device only**.

#### Recent location requests

List the apps which requests location recently.

#### Location services

Touch to report location feedback via Google account.

### 11.3.2 Security

#### Guest mode

Touch the switch  to hide your privacy in guest mode.

#### Set up SIM card lock

- Mark the checkbox of **Lock SIM card** to lock the SIM card with PIN code.
- Touch **Change SIM PIN** to change the PIN code.

#### Make passwords visible

Mark the checkbox to show passwords as you type.

### Device administrators

Touch to view or deactivate device administrators.

### Antitheft

Mark the checkbox to enable antitheft function.

### App options

Touch to view or change app permissions.

### Unknown sources

Mark the checkbox to permit installation of applications that you obtain from web sites, emails, or other locations other than Google Play Store.

To protect your phone and personal data, download applications only from trusted sources, such as Google Play Store.

### Verify apps

Mark the checkbox to disallow or warn before installation of apps that may cause harm.

### Storage type

Show storage type.

### Trusted credentials

Touch to display trusted CA certificates.

### Install from SD card

Touch to install encrypted certificates from the microSD card.

### Clear credentials

Touch to remove all certificates.

### 11.3.3 Language & input

Use the Language & input settings to select the language for the text on your phone and for configuring the onscreen keyboard. You can also configure voice input settings and the pointer speed.

#### Language

Touch to select the language and the region you want.


#### Spell checker

Mark the checkbox to enable the system to show suggested words.

#### Personal dictionary

Touch to open a list of the words you've added to the dictionary. Touch a word to edit or delete it. Touch the add button (+) to add a word.

#### Default

Touch to select a default input method. Touch the settings icon  to configure a certain input method.

#### Android keyboard

The Android keyboard settings apply to the onscreen keyboard that is included with your phone. The correction and capitalization features affect only the English version of the keyboard. Available options are as follows:

- **Input languages:** Touch to set input language.
- **Auto-capitalization:** Mark the checkbox to have the onscreen keyboard automatically capitalize the first letter of the first word after a period, the first word in a text field, and each word in name fields.
- **Vibrate on keypress:** Mark the checkbox to have the phone vibrate briefly each time you touch a key on the onscreen keyboard.
- **Sound on keypress:** Mark the checkbox to play a brief sound each time you touch a key on the onscreen keyboard.

- **Popup on keypress:** Mark the checkbox to popup the key that you touched.
- **Voice input key:** Touch to set the Mic button on Main keyboard or symbols keyboard.
- **Personal dictionary:** Touch to open a list of the words you've added to the dictionary. Touch a word to edit or delete it. Touch the add button (+) to add a word.
- **Add-on dictionaries:** Touch to select language for personal dictionaries.
- **Block offensive words:** Mark the checkbox to hide recognized offensive voice results.
- **Auto-correction:** Touch to turn on/off auto correction, or you can also adjust the sensitivity of correction.
- **Show correction suggestions:** Touch to show the correction suggestions while typing.
- **Next-word suggestions:** Mark the checkbox to use the previous word in making suggestions.
- **Advanced settings:** Touch to view more advanced settings for android keyboard, such as **Key popup dismiss delay**, **Suggest Contact names**, etc.


#### Voice Search

Touch to enter voice search settings.

- **Language:** Touch to choose a language for voice search.
- **Speech output:** Touch to choose speech output: **On**, **Hands-free only** or **Off**.
- **"OK Google" Detection:** Mark the checkbox to say "OK Google" to start a voice search from the Google app.
- **Block offensive words:** Mark the checkbox to hide recognized offensive voice results.

- **Bluetooth headset:** Mark the checkbox to enable record audio through Bluetooth headset if available.

#### Text-to-speech output

- **Preferred engine:** Touch to choose a preferred text-to-speech engine, touch the settings icon  to show more choices for each engine.
- **Speech rate:** Touch to open a dialog where you can select how quickly you want the synthesizer to speak.
- **Listen to an example:** Touch to play a brief sample of the speech synthesizer, using your current settings.
- **Default language status:** Touch to view default language status.

#### Pointer speed

Touch to open a dialog where you can change the pointer speed, touch **OK** to confirm.

### 11.3.4 Backup & reset

#### Back up my data

Mark the checkbox to back up your phone's settings and other application data to Google Servers, with your Google Account. If you replace your phone, the settings and data you've backed up are restored onto the new phone for the first time you sign in with your Google Account. If you mark this option, a wide variety of settings and data are backed up, including your Wi-Fi passwords, bookmarks, a list of the applications you've installed, the words you've added to the dictionary used by the onscreen keyboard, and most of the settings that you configure with the Settings application. If you unmark this option, you stop backing up your settings, and any existing backups are deleted from Google Servers.

#### Backup account

Touch to back up your account.

#### Automatic restore

Mark the checkbox to restore your backed up settings or other data when you reinstall an application.

#### Factory data reset

Erase all of your personal data from internal phone storage, including information about your Google Account, any other accounts, your system and application settings, and any downloaded applications. Resetting the phone does not erase any system software updates you've downloaded or any files on your microSD card, such as music or photos. If you reset the phone in this way, you're prompted to re-enter the same kind of information as when you first started Android.

When you are unable to power on your phone, there is another way to perform a factory data reset by using hardware keys. Press the **Volume up** key and the **Power** key at same time until the screen lights up.

### 11.4 Add account

Use the Add account to add, remove, and manage your Google and other supported accounts. You can also use these settings to control how and whether all applications send, receive, and synchronize data on their own schedules, and whether all applications can synchronize user data automatically.

Gmail, Google Calendar, and other applications may also have their own settings to control how they synchronize data; see the sections on those applications for details.

Touch an account to see all sync options. Mark the checkbox to permit applications to synchronize data on their own schedule. You can also touch the **Menu** key and **Sync now** to synchronize data for the chosen items of that account.

## 11.5 System

### 11.5.1 Date & time

Use Date & Time settings to customize your preferences for how date and time are displayed.

#### Automatic date & time

Mark the checkbox to use network-provided date and time. Or unmark to set all values manually.

#### Automatic time zone

Mark the checkbox to use network-provided time zone. Or unmark to set all values manually.

#### Set date

Touch to open a dialog where you can manually set the phone's date.

#### Set time

Touch to open a dialog where you can manually set the phone's time.

#### Select time zone

Touch to open a dialog where you can set the phone's time zone.

#### Use 24-hour format

Mark the checkbox to display the time using 24-hour clock format.

#### Choose date format

Touch to open a dialog where you can select the format for displaying dates.

### 11.5.2 Accessibility

You use the Accessibility settings to configure any accessibility plug-ins you have installed on your phone.

#### TalkBack

When Talkback is on, your device provides spoken feedback to help blind and low vision users.

#### Magnification gestures

Touch to turn on/ off the Magnification gestures.

#### Power button ends call

Mark the checkbox to end a call by pressing **Power** key during the call.

#### Speak passwords

Mark the checkbox to speak passwords while typing.

#### Accessibility shortcut

Touch to turn on/ off the Accessibility shortcut.

#### Text-to-speech output

Touch to set **Preferred engine**, **Speech rate**, **Listen to an example** and view **Default language status**.

#### Touch & hold delay

Touch to adjust the duration of touch and hold delay. This function enables your phone to differ touch and touch & hold, which may avoid incorrect operations.

### 11.5.3 Printing

Your device supports print the docs by Cloud print. Touch  to turn on/off the cloud print.

When this feature is turned on, touch Cloud print to scan available printers, and then choose a available printer to save the documents.



To use Cloud Print, you need to add a Google Account to your device.

### 11.5.4 Developer options

To access this function, touch **Settings\About phone**, then touch **Build number** 7 times. Now **Developer options** is available.

The Developer options screen contains settings that are useful for developing Android applications.

#### Take bug report

Touch to select to collect information about your current device state and send as an email message.

#### Desktop backup password

Touch to set/change/remove desktop full backup password.

#### Stay awake

Mark the checkbox to prevent the screen from dimming and locking when the phone is connected to a charger or to a USB device that provides power. Don't use this setting with a static image on the phone for long periods of time, or the screen may be marked with that image.

#### Select runtime

Touch to select runtime type.

#### Enable Bluetooth HCI snoop log

Mark the checkbox to capture all Bluetooth HCI packets in a file.

#### Process Stats

Touch to check the status of running applications.

#### USB debugging

Mark the checkbox to permit debugging tools on a computer to communicate with your phone via a USB connection.

#### Revoke USB debugging authorizations

Touch the menu and touch **OK** to revoke access to USB debugging from all computers you've previously authorized.

#### Power menu bug reports

Mark the checkbox to include option in power menu for taking a bug report.

#### Allow mock locations

Mark the checkbox to permit a development tool on a computer to control where the phone believes it is located, rather than using the phone's own internal tools for this purpose.

#### Select debug app

Touch to select debug app.

#### Wait for debugger

Mark the checkbox to wait for a debugger to attach before executing.

#### Verify apps over USB

Mark the checkbox to check apps over USB.

#### Wireless display certification

Mark the checkbox to show options for wireless display certification.

#### Show touches

Mark the checkbox to show visual feedback for touches.

#### Pointer location

Mark the checkbox to show current touch data.

#### Show surface updates

Mark the checkbox to flash entire window surfaces when they update.

#### Show layout bounds

Mark the checkbox to show clip bounds, margins, etc.

#### Force RTL layout direction

Mark the checkbox to force screen layout direction show from right to left for all locales.

## Window animation scale

Touch to adjust the animation scale for your window.

## Transition animation scale

Touch to adjust the animation scale while performing a transition.

## Simulate secondary displays

Touch to set simulate secondary displays.

## Force GPU rendering

Mark the checkbox to force use 2D hardware acceleration in applications.

## Show GPU view updates

Mark the checkbox to show GPU view updates.

## Animator duration scale

Touch to adjust the animation duration scale.

## Show hardware layers updates

Mark the checkbox to flash hardware layers green when they update.

## Debug GPU overdraw

Touch to set debug GPU overdraw options.

## Debug non-rectangular clip operations

Touch to set debug non-rectangular clip operation options.

## Force 4x MSAA

Mark the checkbox to enable 4x MSAA in OpenGL ES 2.0 apps.

## Disable HW overlays

Mark the checkbox to always use GPU for screen compositing.

## Strict mode enabled

Mark the checkbox to enable strict mode. After enabled, the screen will flash when applications do long operations on the main thread.

## Show CPU usage

Mark the checkbox to show current CPU usage.

## Profile GPU rendering

Touch to set Profile GPU rendering.

## Enable OpenGL traces

Touch to adjust OpenGL traces.

## Don't keep activities

Mark the checkbox to destroy all activities as soon as you leave.

## Background process limit

Touch to change the limit for background processes.

## Show all ANRs

Mark the checkbox to show "Application Not Responding" dialogs for background applications.

## 11.5.5 Regulatory & Safety

Touch to view information of the product model, manufacture name, MEID number and some certification logos or text.

## 11.5.6 About phone

This contains information about things ranging from Legal information, Model number, Firmware version, Baseband version, Kernel version, Build number to those listed below:

## Software Update

Touch to check for Software updates.

## Status

This contains the status of the Battery status, Battery level, My phone number, Mobile network type, Signal strength, etc.

## Legal information

Touch to view legal information.

# 12 Making the most of your phone

## 12.1 FOTA Upgrade

Using the FOTA Upgrade tool you can update your phone's software.

To access **Software Update**, please touch the **Menu** key from the Home screen, then **Settings\About phone\Software Update**. Touch **Check for updates**, and the phone will search for the latest software. If you want to update the system, please touch the button **Download**, after it is done please touch **Install** to complete the upgrade. Now your phone's software will be the latest version.

You should turn on data connection before searching for updates. Settings for auto-check intervals is also available once you restart the phone.

If you have chosen auto-check, when the system discovers the new version, dialog will pop up to choose download or ignore, the notification also will show in status bar.

# Safety and use .....

## Please read before using your phone

THE BATTERY IS NOT FULLY CHARGED WHEN YOU TAKE IT OUT OF THE BOX. DO NOT REMOVE THE BATTERY PACK WHEN THE PHONE IS CHARGING. YOUR WARRANTY IS INVALIDATED IF YOU DISASSEMBLE OR ATTEMPT TO DISASSEMBLE THE DEVICE.

## Privacy restrictions

Some countries require full disclosure of recorded telephone conversations, and stipulate that you must inform the person with whom you are speaking that the conversation is being recorded. Always obey the relevant laws and regulations of your country when using the recording feature of your phone.

## Disclaimers

ANY WEATHER, STOCK, OR OTHER INFORMATION, DATA, OR DOCUMENTATION ("ACCESSED INFORMATION") ARE PROVIDED "AS IS" AND WITHOUT ANY WARRANTY OR ANY TECHNICAL SUPPORT. TO THE MAXIMUM EXTENT PERMITTED BY APPLICABLE LAW, TCT MOBILE AND ITS AFFILIATES expressly disclaim any and all representations and warranties, arising by law or otherwise, related to the Accessed Information, including without limitation any express or implied representation or warranty of merchantability, fitness for a particular purpose, non-infringement, quality, accuracy, completeness, effectiveness, reliability, or usefulness. Without limiting the foregoing, it is further understood that TCT Mobile and its Affiliates are not responsible for any use of the Accessed Information or the results arising from such use, and that you use such information at your own risk.

## Limitation of damages

TO THE MAXIMUM EXTENT PERMITTED BY APPLICABLE LAW, IN NO EVENT SHALL TCT MOBILE OR ITS AFFILIATES BE LIABLE TO YOU, ANY USER, OR THIRD PARTY FOR ANY INDIRECT, SPECIAL, CONSEQUENTIAL, INCIDENTAL OR PUNITIVE DAMAGES OF ANY KIND, ARISING IN CONTRACT, TORT, OR OTHERWISE, INCLUDING, BUT NOT LIMITED TO, INJURY, LOSS OF REVENUE, LOSS OF GOODWILL, LOSS OF BUSINESS OPPORTUNITY, LOSS OF DATA, AND/OR LOSS OF PROFITS, REGARDLESS OF THE FORESEEABILITY THEREOF OR WHETHER TCT MOBILE OR ITS AFFILIATES HAVE BEEN ADVISED OF THE POSSIBILITY OF SUCH DAMAGES. AND IN NO EVENT SHALL THE TOTAL LIABILITY OF TCT MOBILE OR ITS AFFILIATES EXCEED THE AMOUNT RECEIVED FROM YOU, REGARDLESS OF THE LEGAL THEORY UNDER WHICH THE CAUSE OF ACTION IS BROUGHT. THE FOREGOING DOES NOT AFFECT ANY STATUTORY RIGHTS WHICH MAY NOT BE DISCLAIMED.

## Important health information and safety precautions

When using this product, the safety precautions below must be taken to avoid possible legal liabilities and damages. Retain and follow all product safety and operating instructions. Observe all warnings in the operating instructions on the product. To reduce the risk of bodily injury, electric shock, fire, and damage to the equipment, observe the following precautions.

### Electrical safety

This product is intended for use when supplied with power from the designated battery or power supply unit. Other usage may be dangerous and will invalidate any approval given to this product.

### Safety precautions for proper grounding installation

**CAUTION:** Connecting to improperly grounded equipment can result in an electric shock to your device.

This product is equipped with a USB Cable for connecting with desktop or notebook computer. Be sure your computer is properly grounded (earthed) before connecting this product to the computer. The power supply cord of a desktop or notebook computer has an equipment-grounding conductor and a grounding plug. The plug must be plugged into an appropriate outlet which is properly installed and grounded in accordance with all local codes and ordinances.

### Safety precautions for power supply unit

#### ■ Use the correct external power source

A product should be operated only from the type of power source indicated on the electrical ratings label. If you are not sure of the type of power source required, consult your authorized service provider or local power company. For a product that operates from battery power or other sources, refer to the operating instructions that are included with the product. This product should be operated only with the following designated power supply unit(s).  
Travel charger: Input: 100-240 V, 50/60 Hz, 150 mA  
Output: 5 V, 1000mA

#### ■ Handle battery packs carefully

This product contains a Lithium-ion polymer or Lithium-ion battery. There is a risk of fire and burns if the battery pack is handled improperly. Do not attempt to open or service the battery pack. Do not disassemble, crush, puncture, short external contacts or circuits, dispose of in fire or water, or expose a battery pack to temperatures higher than 140°F (60°C) .



**WARNING:** Danger of explosion if battery is incorrectly replaced. To reduce risk of fire or burns, do not disassemble, crush, puncture, short external contacts, expose to temperature above 140°F (60°C), or dispose of in fire or water. Replace only with specified batteries. Recycle or dispose of used batteries according to the local regulations or reference guide supplied with your product.



**NOTE:** This product should be operated only with the following designated Battery Pack(s).

Battery: Lithium 2000 mAh (TLI020F2/ CAB2000013C2)

#### ■ Take extra precautions

- Keep the battery or device dry and away from water or any liquid as it may cause a short circuit.
- Keep metal objects away so they don't come in contact with the battery or its connectors as it may lead to short circuit during operation.
- The phone should only be connected to products that bear the USB-IF logo or have completed the USB-IF compliance program.
- Do not use a battery that appears damaged, deformed, or discolored, or the one that has any rust on its casing, overheats, or emits a foul odor.
- Always keep the battery out of the reach of babies and small children, to avoid swallowing of the battery. Consult the doctor immediately if the battery is swallowed.
- Only use the battery with a charging system that has been qualified with the system per this standard, IEEE-Std-172 5-2006. Use of an unqualified battery or charger may present a risk of fire, explosion, leakage or other hazard.
- Replace the battery only with another battery that has been qualified with the system per this standard, IEEE-Std-172 5-2006. Use of an unqualified battery may present a risk of fire, explosion, leakage or other hazard.
- Avoid dropping the phone or battery. If the phone or battery is dropped, especially on a hard surface, and the user suspects damage, take it to a service center for inspection.
- If the battery leaks:
  - Do not allow the leaking fluid to come in contact with skin or clothing. If already in contact, flush the affected area immediately with clean water and seek medical advice.

- Do not allow the leaking fluid to come in contact with eyes. If already in contact, DO NOT rub; rinse with clean water immediately and seek medical advice.
- Take extra precautions to keep a leaking battery away from fire as there is a danger of ignition or explosion.

### Safety precautions for direct sunlight

Keep this product away from excessive moisture and extreme temperatures. Do not leave the product or its battery inside a vehicle or in places where the temperature may exceed 140°F (60°C), such as on a car dashboard, window sill, or behind a glass that is exposed to direct sunlight or strong ultraviolet light for extended periods of time. This may damage the product, overheat the battery, or pose a risk to the vehicle.

### Prevention of hearing loss

**CAUTION:** Permanent hearing loss may occur if earphones or headphones are used at high volume for prolonged periods of time.

### Safety in aircraft

Due to the possible interference caused by this product to an aircraft's navigation system and its communications network, using this device's phone function on board an airplane is against the law in most countries. If you want to use this device when on board an aircraft, remember to turn off your phone by switching to Airplane Mode.

### Environment restrictions

Do not use this product in gas stations, fuel depots, chemical plants or where blasting operations are in progress, or in potentially explosive atmospheres such as fuelling areas, fuel storehouses, below deck on boats, chemical plants, fuel or chemical transfer or storage facilities, and areas where the air contains chemicals or particles, such as grain, dust, or metal powders. Please be aware that sparks in such areas could cause an explosion or fire resulting in bodily injury or even death.

## Explosive atmospheres

When in any area with a potentially explosive atmosphere or where flammable materials exist, the product should be turned off and the user should obey all signs and instructions. Sparks in such areas could cause an explosion or fire resulting in bodily injury or even death.

Users are advised not to use the equipment at refueling points such as service or gas stations, and are reminded of the need to observe restrictions on the use of radio equipment in fuel depots, chemical plants, or where blasting operations are in progress. Areas with a potentially explosive atmosphere are often, but not always, clearly marked. These include fueling areas, below deck on boats, fuel or chemical transfer or storage facilities, and areas where the air contains chemicals or particles, such as grain, dust, or metal powders.

## Road safety

Full attention must be given to driving at all times in order to reduce the risk of an accident. Using a phone while driving (even with a hands free kit) causes distraction and can lead to an accident. You must comply with local laws and regulations restricting the use of wireless devices while driving.

## Safety precautions for RF exposure

- Avoid using your phone near metal structures (for example, the steel frame of a building).
- Avoid using your phone near strong electromagnetic sources, such as microwave ovens, sound speakers, TV and radio.
- Use only original manufacturer-approved accessories, or accessories that do not contain any metal.
- Use of non-original manufacturer-approved accessories may violate your local RF exposure guidelines and should be avoided.

## Interference with medical equipment functions

This product may cause medical equipment to malfunction. The use of this device is forbidden in most hospitals and medical clinics.

If you use any other personal medical device, consult the manufacturer of your device to determine if they are adequately shielded from external RF energy. Your physician may be able to assist you in obtaining this information.

Turn your phone OFF in health care facilities when any regulations posted in these areas instruct you to do so. Hospitals or health care facilities may be using equipment that could be sensitive to external RF energy.

## Nonionizing radiation

Your device has an internal antenna. This product should be operated in its normal-use position to ensure the radiative performance and safety of the interference. As with other mobile radio transmitting equipment, users are advised that for satisfactory operation of the equipment and for the safety of personnel, it is recommended that no part of the human body be allowed to come too close to the antenna during operation of the equipment.

Use only the supplied integral antenna. Use of unauthorized or modified antennas may impair call quality and damage the phone, causing loss of performance and SAR levels exceeding the recommended limits as well as result in non-compliance with local regulatory requirements in your country. To assure optimal phone performance and ensure human exposure to RF energy is within the guidelines set forth in the relevant standards, always use your device only in its normal-use position. Contact with the antenna area may impair call quality and cause your device to operate at a higher power level than needed. Avoiding contact with the antenna area when the phone is IN USE optimizes the antenna performance and the battery life.

## Electrical safety

### ■ Accessories

- Use only approved accessories.
- Do not connect with incompatible products or accessories.
- Take care not to touch or allow metal objects, such as coins or key rings, to contact or short-circuit the battery terminals.

### ■ Connection to a car

- Seek professional advice when connecting a phone interface to the vehicle electrical system.

### ■ Faulty and damaged products

- Do not attempt to disassemble the phone or its accessory.
- Only qualified personnel must service or repair the phone or its accessory.

## General precautions

You alone are responsible for how you use your phone and any consequences of its use. You must always switch off your phone wherever the use of a phone is prohibited. Use of your phone is subject to safety measures designed to protect users and their environment.

### ■ Avoid applying excessive pressure to the device

Do not apply excessive pressure on the screen and the device to prevent damaging them and remove the device from your pants' pocket before sitting down. It is also recommended that you store the device in a protective case and only use the device stylus or your finger when interacting with the touch screen. Cracked display screens due to improper handling are not covered by the warranty.

### ■ Device getting warm after prolonged use

When using your device for prolonged periods of time, such as when you're talking on the phone, charging the battery or browsing the Web, the device may become warm. In most cases, this condition is normal and therefore should not be interpreted as a problem with the device.

### ■ Heed service markings

Except as explained elsewhere in the Operating or Service documentation, do not service any product yourself. Service needed on components inside the device should be done by an authorized service technician or provider.

### ■ Protect your phone

- Always treat your phone and its accessories with care and keep them in a clean and dust-free place.
- Do not expose your phone or its accessories to open flames or lit tobacco products.
- Do not expose your phone or its accessories to liquid, moisture or high humidity.

- Do not drop, throw or try to bend your phone or its accessories.
- Do not use harsh chemicals, cleaning solvents, or aerosols to clean the device or its accessories.
- Do not paint your phone or its accessories.
- Do not attempt to disassemble your phone or its accessories, only authorized personnel must do so.
- Do not expose your phone or its accessories to extreme temperatures, maximum 140°F (60°C).
- Please check local regulations for disposal of electronic products.
- Do not carry your phone in your back pocket as it could break when you sit down.

### ■ Damage requiring service

Unplug the product from the electrical outlet and refer servicing to an authorized service technician or provider under the following conditions:

- Liquid has been spilled or an object has fallen into the product.
- The product has been exposed to rain or water.
- The product has been dropped or damaged.
- There are noticeable signs of overheating.
- The product does not operate normally when you follow the operating instructions.

### ■ Avoid hot areas

The product should be placed away from heat sources such as radiators, heat registers, stoves, or other products (including amplifiers) that produce heat.

### ■ Avoid wet areas

Never use the product in a wet location.

### ■ Avoid using your device after a dramatic change in temperature

When you move your device between environments with very different temperature and/or humidity ranges, condensation may form on or within the device. To avoid damaging the device, allow sufficient time for the moisture to evaporate before using the device.

**NOTICE:** When taking the device from low-temperature conditions into a warmer environment or from high-temperature conditions into a cooler environment, allow the device to acclimate to room temperature before turning on power.

■ **Avoid pushing objects into product**

Never push objects of any kind into cabinet slots or other openings in the product. Slots and openings are provided for ventilation. These openings must not be blocked or covered.

■ **Air bags**

Do not place a phone in the area over an air bag or in the air bag deployment area. Store the phone safely before driving your vehicle.

■ **Mounting accessories**

Do not use the product on an unstable table, cart, stand, tripod, or bracket. Any mounting of the product should follow the manufacturer's instructions, and should use a mounting accessory recommended by the manufacturer.

■ **Avoid unstable mounting**

Do not place the product with an unstable base.

■ **Use product with approved equipment**

This product should be used only with personal computers and options identified as suitable for use with your equipment.

■ **Adjust the volume**

Turn down the volume before using headphones or other audio devices.

■ **Cleaning**

Unplug the product from the wall outlet before cleaning. Do not use liquid cleaners or aerosol cleaners. Use a damp cloth for cleaning, but NEVER use water to clean the LCD screen.

■ **Small children**

Do not leave your phone and its accessories within the reach of small children or allow them to play with it. They could hurt themselves or others, or could accidentally damage the phone. Your phone contains small parts with sharp edges that may cause an injury or which could become detached and create a choking hazard.

■ **Repetitive motion injuries**

To minimize the risk of RSI, when Texting or playing games with your phone:

- Do not grip the phone too tightly
- Press the buttons lightly
- Make use of the special features in the handset which minimize the number of buttons which have to be pressed, such as message templates and predictive text.
- Take lots of breaks to stretch and relax.

■ **Operating machinery**

Full attention must be given to operating the machinery in order to reduce the risk of an accident.

■ **Loud noise**

This phone is capable of producing loud noises which may damage your hearing.

■ **Emergency calls**

This phone, like any wireless phone, operates using radio signals, which cannot guarantee connection in all conditions. Therefore, you must never rely solely on any wireless phone for emergency communications.

## **Regulatory agency identifications**

For regulatory identification purposes, your product is assigned a model number of A995L.

To ensure continued reliable and safe operation of your device, use only the accessories listed below with your A995L device.

Operating temperature range: 32°F to 104°F (0°C to 40°C)

**NOTE:** This product is intended for use with a certified Class Limited Power Source, rated 4.35 Volts DC, maximum 1 Amp power supply unit.

## **Federal Communication Commission Interference Statement**

This equipment has been tested and found to comply with the limits for a Class B digital device, pursuant to Part 15 of the FCC Rules. These limits are designed to provide reasonable protection against harmful interference in a residential installation. This equipment generates, uses and can radiate radio frequency energy and, if not installed and used in accordance with the instructions, may cause harmful interference to radio communications. However, there is no guarantee that interference will not occur in a particular installation. If this equipment does cause harmful interference to radio or television reception, which can be determined by turning the equipment off and on, the user is encouraged to try to correct the interference by one of the following measures:

- Reorient or relocate the receiving antenna.
- Increase the separation between the equipment and receiver.
- Connect the equipment into an outlet on a circuit different from that to which the receiver is connected.
- Consult the dealer or an experienced radio or television technician for help.

**FCC Caution:** Any changes or modifications not expressly approved by the party responsible for compliance could void the user's authority to operate this equipment.

This device complies with Part 15 of the FCC Rules. Operation is subject to the following two conditions: (1) This device may not cause harmful interference, and (2) this device must accept any interference received, including interference that may cause undesired operation.

## **Important Note**

### **Radiation Exposure Statement:**

This equipment complies with FCC radiation exposure limits set forth for an uncontrolled environment. End users must follow the specific operating instructions for satisfying RF exposure compliance. To maintain compliance with FCC RF exposure compliance requirements, please follow operation instruction as documented in this manual.

This transmitter must not be co-located or operating in conjunction with any other antenna or transmitter, except the transmitters built-in with the device.

### **FCC Hearing-Aid Compatibility (HAC) Regulations for Wireless Devices**

On July 10, 2003, the U.S. Federal Communications Commission (FCC) Report and Order in WT Docket 01- 09 modified the exception of wireless phones under the Hearing Aid Compatibility Act of 1988 (HAC Act) to require digital wireless phones be compatible with hearing-aid. The intent of the HAC Act is to ensure reasonable access to telecommunications services for persons with hearing disabilities. While some wireless phones are used near some hearing devices (hearing aid and cochlear implants), users may detect a buzzing, humming, or whining noise. Some hearing devices are more immune than others to this interference noise, and phones also vary in the amount of interference they generate. The wireless telephone industry has developed a rating system for wireless phones, to assist hearing device users find phones that may be compatible with their hearing devices. Not all phones have been rated. Phones that are rated have the rating on their box or a label located on the box. The ratings are not guarantees. Results will vary depending on the user's hearing device and hearing loss. If your hearing device happens to be vulnerable to interference, you may not be able to use a rated phone successfully. Trying out the phone with your hearing device is the best way to evaluate it for your personal needs.



M-Ratings: Phones rated M3 or M4 meet FCC requirements and are likely to generate less interference to hearing devices than phones that are not rated. M4 is the better/higher of the two ratings. Your device is rated M4.

T-Ratings: Phones rated T3 or T4 meet FCC requirements and are likely to be more usable with a hearing aid's telecoil than phones that are not rated. T4 is the better/higher of the two ratings. Your device is rated T4.



Please power off the Bluetooth® function while using hearing aid devices with your ALCATEL A520L.

Hearing devices may also be rated. Your hearing device manufacturer or hearing health professional may help you find this rating. Higher ratings mean that the hearing device is relatively immune to interference noise.

The hearing aid and wireless phone rating values are then added together. A sum of 5 is considered acceptable for normal use. A sum of 6 is considered for better use. A sum of 8 is considered for best use. In the above example, if a hearing aid meets the M2 level rating and the wireless phone meets the M3 level rating, the sum of the two values equal M5. This should provide the hearing aid user with "normal usage" while using their hearing aid with the particular wireless phone. "Normal usage" in this context is defined as a signal quality that is acceptable for normal operation.

This methodology applies equally for T ratings. The M mark is intended to be synonymous with the U mark. The T mark is intended to be synonymous with the UT mark. The M and T marks are recommended by the Alliance for Telecommunications Industries Solutions (ATIS). The U and UT marks are referenced in Section 20.19 of the FCC Rules. The HAC rating and measurement procedure are described in the American National Standards Institute (ANSI) C63.19 standard.

#### For information about hearing aids and digital wireless phones

FCC Hearing Aid Compatibility and Volume Control:

<http://www.fcc.gov/cgb/dro/hearing.html>

Gallaudet University, RERC:

<https://fjallfoss.fcc.gov/oetcf/eas/reports/GenericSearch.cfm>

#### SAR Information

1.31 W/kg @ 1g (HEAD)

0.81 W/kg @ 1g (BODY)

THIS MODEL DEVICE MEETS THE GOVERNMENT'S REQUIREMENTS FOR EXPOSURE TO RADIO WAVES. For body worn operation, this phone has been tested and meets the FCC RF exposure guidelines when used with the TCT Mobile Limited. Accessories supplied or designated for this product. Use of other accessories may not ensure compliance with the FCC RF exposure guidelines.

Your wireless mobile phone is a radio transmitter and receiver. It is designed and manufactured not to exceed the emission limits for exposure to radio frequency (RF) energy set by the Federal Communications Commission of the U.S. Government. These limits are part of comprehensive guidelines and establish permitted levels of RF energy for the general population. The guidelines are based on the safety standards previously set by both U.S. and international standards bodies:

- American National Standards Institute (ANSI) IEEE. C95.1-1992 .
- National Council on Radiation Protection and Measurement (NCRP). Report 86. 1986.
- International Commission on Non-Ionizing Radiation Protection (ICNIRP) 1996.
- Ministry of Health (Canada), Safety Code 6. The standards include a substantial safety margin designed to assure the safety of all persons, regardless of age and health.

The exposure standard for wireless mobile phone employs a unit of measurement known as the Specific Absorption Rate, or SAR. The SAR limit set by the FCC is 1.6 W/kg\*.

The FCC has granted an Equipment Authorization for this model device with all reported SAR levels evaluated as in compliance with the FCC RF exposure guidelines. SAR information on this model device is on file with the FCC and can be found under the Display Grant section of <https://fjallfoss.fcc.gov/oetcf/eas/reports/GenericSearch.cfm> after searching on FCC ID: RAD535. Additional information on Specific Absorption Rates (SAR) can be found on the Cellular Telecommunications & Internet Association (CTIA) Web-site as <http://http://www.ctia.org/>.

\* In the U.S. and Canada, the SAR limit for mobile phone used by the public is 1.6 Watts/kg (W/kg) averaged over one gram of tissue. The standard incorporates a substantial margin of safety to give additional protection for the public and to account for any variations in usage.

Normal condition only to ensure the radiative performance and safety of the interference. As with other mobile radio transmitting equipment, users are advised that for satisfactory operation of the equipment and for the safety of personnel, it is recommended that no part of the human body be allowed to come too close to the antenna during operation of the equipment.

#### Body-worn Operation

This device was tested for typical body-worn operations. To comply with RF exposure requirements, a minimum separation distance of 15 mm must be maintained between the user's body and the handset, including the antenna. Third-party belt-clips, holsters, and similar accessories used by this device should not contain any metallic components. Body-worn accessories that do not meet these requirements may not comply with RF exposure requirements and should be avoided.

Use only the supplied or an approved antenna. Unauthorized antennas, modifications, or attachments could impair call quality, damage the phone, or result in violation of regulations. Do not use the phone with a damaged antenna. If a damaged antenna comes into contact with the skin, a minor burn may result. Please contact your local dealer for replacement antenna.

#### FCC RF Radiation Exposure Statement

- This Transmitter has been demonstrated co-location compliance requirements with Bluetooth® and WLAN. This transmitter must not be co-located or operating in conjunction with any other antenna or transmitter.
- This equipment complies with FCC RF radiation exposure limits set forth for an uncontrolled environment.

#### Telecommunications & Internet Association (TIA) safety information

##### Pacemakers

The Health Industry Manufacturers Association recommends that a minimum separation of 15 cm (6 inches) be maintained between a handheld wireless phone and a pacemaker to avoid potential interference with the pacemaker. These recommendations are consistent with the independent research by and recommendations of Wireless Technology Research.

Persons with pacemakers:

- Should ALWAYS keep the phone more than 15 cm (6 inches) from their pacemaker when the phone is turned ON.
- Should not carry the phone in a breast pocket.
- Should use the ear opposite the pacemaker to minimize the potential for interference. If you have any reason to suspect that interference is taking place, turn the phone OFF immediately.

##### Hearing aids

Some digital wireless phones may interfere with some hearing aids. In the event of such interference, you may want to consult your service provider, or call the customer service line to discuss alternatives.

##### RoHS compliance

This product is in compliance with Directive 002/95/EC of the European Parliament and of the Council of 7 January 2003, on the restriction of the use of certain hazardous substances in electrical and electronic equipment (RoHS) and its amendments.